



ZW10 mouse mAb

Catalog No	BYmab-11602
Isotype	IgG
Reactivity	Human; Mouse;Rat
Applications	WB
Gene Name	ZW10
Protein Name	ZW10
Immunogen	Synthesized peptide derived from human ZW10 AA range: 38-88
Specificity	This antibody detects endogenous levels of ZW10 at Human/Mouse/Rat
Formulation	Liquid in PBS containing 50% glycerol, 0.5% BSA and 0.02% sodium azide.
Source	Monoclonal, Mouse,IgG
Purification	The antibody was affinity-purified from mouse antiserum by affinity-chromatography using epitope-specific immunogen.
Dilution	WB 1:500-2000
Concentration	1 mg/ml
Purity	≥90%
Storage Stability	-20°C/1 year
Synonyms	
Observed Band	
Cell Pathway	Cytoplasm . Endoplasmic reticulum membrane ; Peripheral membrane protein . Chromosome, centromere, kinetochore . Cytoplasm, cytoskeleton, spindle . Lipid droplet . Dynamic pattern of localization during the cell cycle. In most cells at interphase, present diffusely in the cytoplasm (PubMed:15029241). In prometaphase, associated with the kinetochore. At metaphase, detected both at the kinetochores and, most prominently, at the spindle, particularly at the spindle poles. In very early anaphase, detected on segregating kinetochores. In late anaphase and telophase, accumulates at the spindle midzone (PubMed:11590237). .
Tissue Specificity	Widely expressed.
Function	developmental stage:No significant variation in expression during cell cycle.,function:Essential component of the mitotic checkpoint, which prevents cells from prematurely exiting mitosis. Required for the assembly of the dynein-dynactin and MAD1-MAD2 complexes onto kinetochores. Involved in regulation of membrane traffic between the Golgi and the endoplasmic

Nanjing BYabscience technology Co.,Ltd



reticulum.,miscellaneous:Overexpression as well as silencing of ZW10 disrupts the morphology of the ER-Golgi intermediate compartment as well as the Golgi apparatus and slows down ER-Golgi transport.,similarity:Belongs to the ZW10 family.,subcellular location:Dynamic pattern of localization during the cell cycle. In most cells at interphase, present diffusely in the cytoplasm. In prometaphase, associated with the kinetochore. At metaphase, detected both at the kinetochores and, most prominently, at the spindle, particularly at the s

Background

This gene encodes a protein that is one of many involved in mechanisms to ensure proper chromosome segregation during cell division. This protein is an essential component of the mitotic checkpoint, which prevents cells from prematurely exiting mitosis. [provided by RefSeq, Aug 2011],

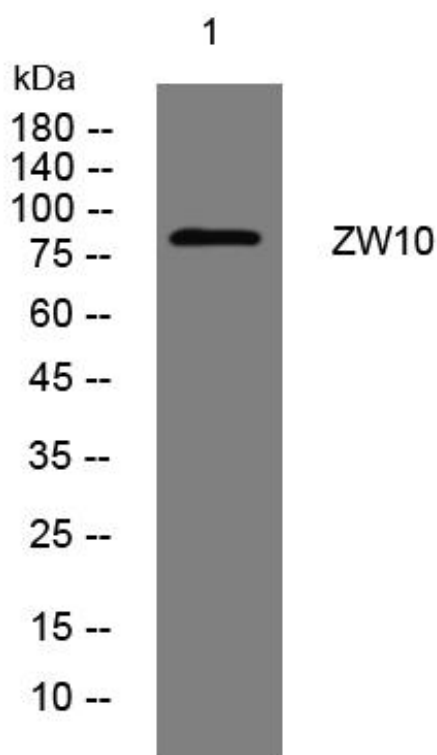
matters needing attention

Avoid repeated freezing and thawing!

Usage suggestions

This product can be used in immunological reaction related experiments. For more information, please consult technical personnel.

Products Images



Western Blot analysis of various cells using ZW10 mouse mAb