



SC22C mouse mAb

Catalog No	BYmab-11581
Isotype	IgG
Reactivity	Human; Mouse
Applications	WB
Gene Name	SEC22C SEC22L3 UNQ459/PRO784
Protein Name	SC22C
Immunogen	Synthesized peptide derived from human SC22C AA range: 130-180
Specificity	This antibody detects endogenous levels of SC22C at Human/Mouse
Formulation	Liquid in PBS containing 50% glycerol, 0.5% BSA and 0.02% sodium azide.
Source	Monoclonal, Mouse,IgG
Purification	The antibody was affinity-purified from mouse antiserum by affinity-chromatography using epitope-specific immunogen.
Dilution	WB 1:500-2000
Concentration	1 mg/ml
Purity	≥90%
Storage Stability	-20°C/1 year
Synonyms	
Observed Band	
Cell Pathway	Endoplasmic reticulum membrane ; Multi-pass membrane protein .
Tissue Specificity	Ubiquitously expressed.
Function	function:May be involved in vesicle transport between the ER and the Golgi complex.,similarity:Belongs to the synaptobrevin family.,similarity:Contains 1 longin domain.,tissue specificity:Ubiquitously expressed.,
Background	This gene encodes a member of the SEC22 family of vesicle trafficking proteins. The encoded protein is localized to the endoplasmic reticulum and may play a role in the early stages of ER-Golgi protein trafficking. Alternatively spliced transcript variants encoding multiple isoforms have been observed for this gene. [provided by RefSeq, Jan 2011],
matters needing attention	Avoid repeated freezing and thawing!

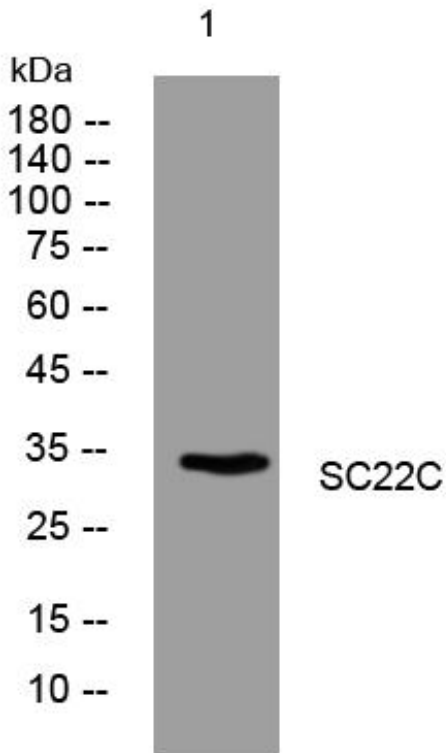
Nanjing BYabscience technology Co.,Ltd



Usage suggestions

This product can be used in immunological reaction related experiments. For more information, please consult technical personnel.

Products Images



Western Blot analysis of various cells using SC22C mouse mAb

Nanjing BYabs science technology Co.,Ltd

网址: www.njbybio.com

官方热线: 025-5229-8998

监督电话: 15950492658