



SC6A9 mouse mAb

Catalog No	BYmab-11549
Isotype	IgG
Reactivity	Human; Mouse;Rat
Applications	WB
Gene Name	SLC6A9
Protein Name	SC6A9
Immunogen	Synthesized peptide derived from human SC6A9 AA range: 101-151
Specificity	This antibody detects endogenous levels of SC6A9 at Human/Mouse/Rat
Formulation	Liquid in PBS containing 50% glycerol, 0.5% BSA and 0.02% sodium azide.
Source	Monoclonal, Mouse,IgG
Purification	The antibody was affinity-purified from mouse antiserum by affinity-chromatography using epitope-specific immunogen.
Dilution	WB 1:500-2000
Concentration	1 mg/ml
Purity	≥90%
Storage Stability	-20°C/1 year
Synonyms	
Observed Band	
Cell Pathway	Membrane; Multi-pass membrane protein.
Tissue Specificity	Isoform GlyT-1A and isoform GlyT-1B can be found in brain, kidney, pancreas, lung, placenta and liver but isoform GlyT-1C is only found in brain.
Function	function:Terminates the action of glycine by its high affinity sodium-dependent reuptake into presynaptic terminals. May play a role in regulation of glycine levels in NMDA receptor-mediated neurotransmission.,similarity:Belongs to the sodium:neurotransmitter symporter (SNF) family.,tissue specificity:All GLYT-1 subtypes can be found in brain, kidney, pancreas, lung, placenta, liver. But GLYT-1C subtype is only found in the brain.,
Background	The amino acid glycine acts as an inhibitory neurotransmitter in the central nervous system. The protein encoded by this gene is one of two transporters that stop glycine signaling by removing it from the synaptic cleft. [provided by RefSeq, Jun 2016],

Nanjing BYabscience technology Co.,Ltd



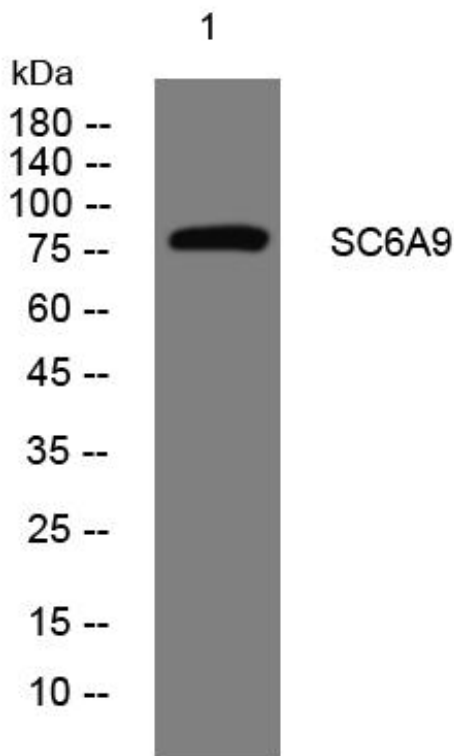
matters needing attention

Avoid repeated freezing and thawing!

Usage suggestions

This product can be used in immunological reaction related experiments. For more information, please consult technical personnel.

Products Images



Western Blot analysis of various cells using SC6A9 mouse mAb

Nanjing BYabs science technology Co.,Ltd

网址: www.njbybio.com

官方热线: 025-5229-8998

监督电话: 15950492658