



RPH3L mouse mAb

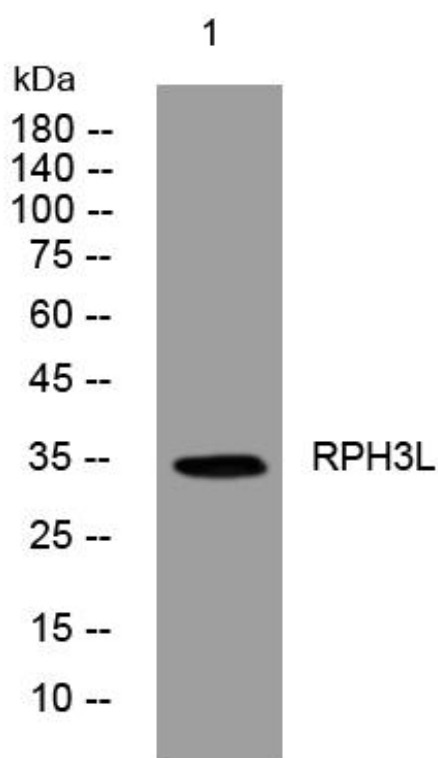
Catalog No	BYmab-11546
Isotype	IgG
Reactivity	Human; Mouse;Rat
Applications	WB
Gene Name	RPH3AL NOC2
Protein Name	RPH3L
Immunogen	Synthesized peptide derived from human RPH3L AA range: 162-212
Specificity	This antibody detects endogenous levels of RPH3L at Human/Mouse/Rat
Formulation	Liquid in PBS containing 50% glycerol, 0.5% BSA and 0.02% sodium azide.
Source	Monoclonal, Mouse,IgG
Purification	The antibody was affinity-purified from mouse antiserum by affinity-chromatography using epitope-specific immunogen.
Dilution	WB 1:500-2000
Concentration	1 mg/ml
Purity	≥90%
Storage Stability	-20°C/1 year
Synonyms	
Observed Band	
Cell Pathway	Cytoplasm . Cytoplasmic vesicle, secretory vesicle membrane . Recruited to the vesicle membrane in a GTP- and RAB3B-dependent manner in epithelial cells.
Tissue Specificity	Moderate to high levels of expression in thyroid, ovary, stomach, heart, pancreas, skeletal muscle, kidney and liver. Also detected in epithelial cells.
Function	domain:The N-terminus of the RabBD domain is necessary and sufficient for interaction with RAB27A.,function:Rab GTPase effector involved in the late steps of regulated exocytosis, both in endocrine and exocrine cells (By similarity). Acts as a potential RAB3B effector protein in epithelial cells.,similarity:Contains 1 FYVE-type zinc finger.,similarity:Contains 1 RabBD (Rab-binding) domain.,subcellular location:Recruited to the vesicle membrane in a GTP-and RAB3B-dependent manner in epithelial cells.,subunit:Recruited to dense-core vesicles through specific interaction with RAB27A in endocrine cells. Interacts with RAB3A, RAB3B, RAB3C and RAB3D. Interacts with ZYX.,tissue specificity:Moderate to high levels of expression in thyroid, ovary, stomach, heart, pancreas, skeletal muscle, kidney and liver. Also detected in epithelial cells.,

Nanjing BYabscience technology Co.,Ltd



Background	The protein encoded by this gene plays a direct regulatory role in calcium-ion-dependent exocytosis in both endocrine and exocrine cells and plays a key role in insulin secretion by pancreatic cells. This gene is likely a tumor suppressor. Alternative splicing results in multiple transcript variants encoding distinct isoforms. [provided by RefSeq, Jun 2010],
matters needing attention	Avoid repeated freezing and thawing!
Usage suggestions	This product can be used in immunological reaction related experiments. For more information, please consult technical personnel.

Products Images



Western Blot analysis of various cells using RPH3L mouse mAb