



# CLMN mouse mAb

Catalog No	BYmab-11533
Isotype	IgG
Reactivity	Human; Mouse
Applications	WB
Gene Name	CLMN KIAA1188
Protein Name	CLMN
Immunogen	Synthesized peptide derived from human CLMN AA range: 693-743
Specificity	This antibody detects endogenous levels of CLMN at Human/Mouse
Formulation	Liquid in PBS containing 50% glycerol, 0.5% BSA and 0.02% sodium azide.
Source	Monoclonal, Mouse,IgG
Purification	The antibody was affinity-purified from mouse antiserum by affinity-chromatography using epitope-specific immunogen.
Dilution	WB 1:500-2000
Concentration	1 mg/ml
Purity	≥90%
Storage Stability	-20°C/1 year
Synonyms	
Observed Band	
Cell Pathway	Membrane ; Single-pass type IV membrane protein .
Tissue Specificity	Widely expressed at intermediate level.
Function	sequence caution:Chimeric cDNA.,similarity:Contains 1 actin-binding domain.,similarity:Contains 2 CH (calponin-homology) domains.,tissue specificity:Widely expressed at intermediate level.,
Background	
matters needing attention	Avoid repeated freezing and thawing!

Nanjing BYabscience technology Co.,Ltd

网址: [www.njbybio.com](http://www.njbybio.com)

官方热线: 025-5229-8998

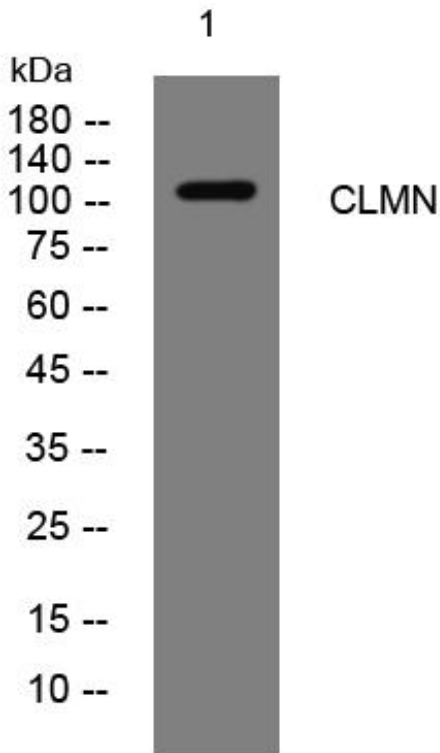
监督电话: 15950492658



### Usage suggestions

This product can be used in immunological reaction related experiments. For more information, please consult technical personnel.

## Products Images



Western Blot analysis of various cells using CLMN mouse mAb

Nanjing BYabs science technology Co.,Ltd

网址: [www.njbybio.com](http://www.njbybio.com)

官方热线: 025-5229-8998

监督电话: 15950492658