

TMCC1 mouse mAb

Catalog No	BYmab-11527
Isotype	IgG
Reactivity	Human; Mouse
Applications	WB
Gene Name	TMCC1 KIAA0779
Protein Name	TMCC1
Immunogen	Synthesized peptide derived from human TMCC1 AA range: 275-325
Specificity	This antibody detects endogenous levels of TMCC1 at Human/Mouse
Formulation	Liquid in PBS containing 50% glycerol, 0.5% BSA and 0.02% sodium azide.
Source	Monoclonal, Mouse,IgG
Purification	The antibody was affinity-purified from mouse antiserum by affinity-chromatography using epitope-specific immunogen.
Dilution	WB 1:500-2000
Concentration	1 mg/ml
Purity	≥90%
Storage Stability	-20℃/1 year
Synonyms	
Observed Band	
Cell Pathway	Endoplasmic reticulum membrane ; Multi-pass membrane protein . Specifically localizes to contact sites between the endoplasmic reticulum and endosomes that are spatially and temporally linked to endosome fission. .
Tissue Specificity	
Function	similarity:Belongs to the TEX28 family.,
Background	
matters needing attention	Avoid repeated freezing and thawing!

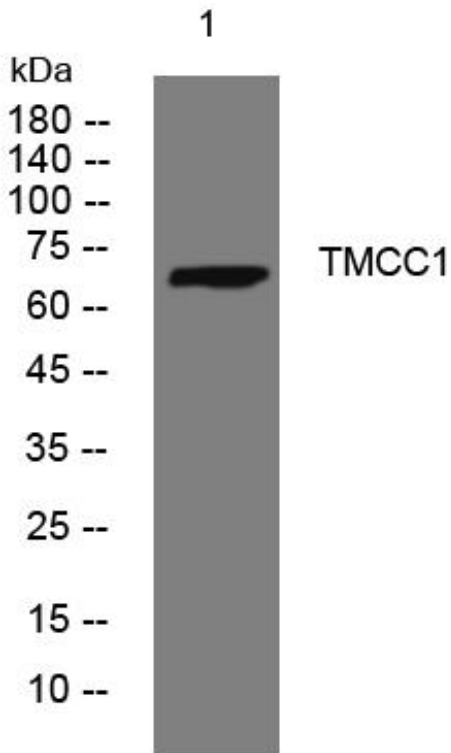
Nanjing BYabscience technology Co.,Ltd



Usage suggestions

This product can be used in immunological reaction related experiments. For more information, please consult technical personnel.

Products Images



Western Blot analysis of various cells using TMCC1 mouse mAb

Nanjing BYabs science technology Co.,Ltd

网址: www.njbybio.com

官方热线: 025-5229-8998

监督电话: 15950492658