



FUZZY mouse mAb

Catalog No	BYmab-11523
Isotype	IgG
Reactivity	Human; Mouse;Rat
Applications	WB
Gene Name	FUZ FY
Protein Name	FUZZY
Immunogen	Synthesized peptide derived from human FUZZY AA range: 92-142
Specificity	This antibody detects endogenous levels of FUZZY at Human/Mouse/Rat
Formulation	Liquid in PBS containing 50% glycerol, 0.5% BSA and 0.02% sodium azide.
Source	Monoclonal, Mouse,IgG
Purification	The antibody was affinity-purified from mouse antiserum by affinity-chromatography using epitope-specific immunogen.
Dilution	WB 1:500-2000
Concentration	1 mg/ml
Purity	≥90%
Storage Stability	-20°C/1 year
Synonyms	
Observed Band	
Cell Pathway	Cytoplasm . Cytoplasm, cytoskeleton . Cytoplasm, cytoskeleton, cilium basal body .
Tissue Specificity	
Function	function:May be involved in cytoskeleton function and cell polarity in epithelial cells.,similarity:Belongs to the fuzzy family.,
Background	This gene encodes a planar cell polarity protein that is involved in ciliogenesis and directional cell movement. Knockout studies in mice exhibit neural tube defects and defective cilia, and mutations in this gene are associated with neural tube defects in humans. Alternatively spliced transcript variants have been found for this gene. [provided by RefSeq, Jul 2012],
matters needing attention	Avoid repeated freezing and thawing!

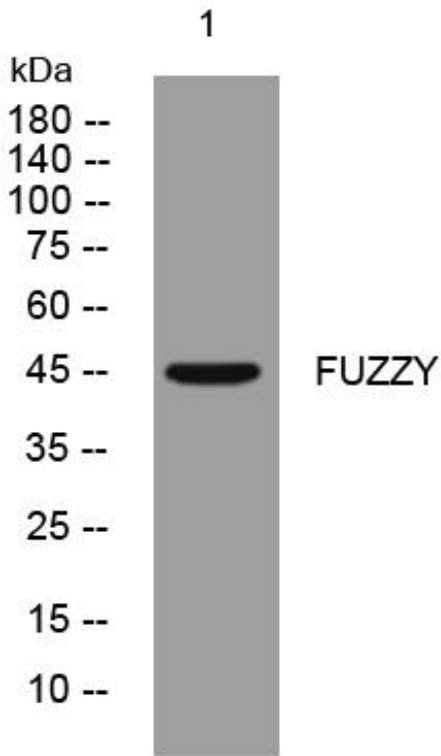
Nanjing BYabscience technology Co.,Ltd



Usage suggestions

This product can be used in immunological reaction related experiments. For more information, please consult technical personnel.

Products Images



Western Blot analysis of various cells using FUZZY mouse mAb

Nanjing BYabscience technology Co.,Ltd

网址: www.njbybio.com

官方热线: 025-5229-8998

监督电话: 15950492658