



TRM6 mouse mAb

Catalog No	BYmab-11522
Isotype	IgG
Reactivity	Human; Mouse
Applications	WB
Gene Name	TRMT6 KIAA1153 TRM6 CGI-09
Protein Name	TRM6
Immunogen	Synthesized peptide derived from human TRM6 AA range: 175-225
Specificity	This antibody detects endogenous levels of TRM6 at Human/Mouse
Formulation	Liquid in PBS containing 50% glycerol, 0.5% BSA and 0.02% sodium azide.
Source	Monoclonal, Mouse,IgG
Purification	The antibody was affinity-purified from mouse antiserum by affinity-chromatography using epitope-specific immunogen.
Dilution	WB 1:500-2000
Concentration	1 mg/ml
Purity	≥90%
Storage Stability	-20°C/1 year
Synonyms	
Observed Band	
Cell Pathway	Nucleus .
Tissue Specificity	Expressed in brain, liver, testis and ovary.
Function	function:Substrate-binding subunit of tRNA (adenine-N(1)-)-methyltransferase, which catalyzes the formation of N(1)-methyladenine at position 58 (m1A58) in initiator methionyl-tRNA.,PTM:Phosphorylated upon DNA damage, probably by ATM or ATR.,similarity:Belongs to the TRM6/GCD10 family.,subunit:tRNA (adenine-N(1)-)-methyltransferase is a heterodimer of trm6 and trm61.,tissue specificity:Expressed in brain, liver, testis and ovary.,
Background	This gene encodes a member of the tRNA methyltransferase 6 protein family. A similar protein in yeast is part of a two component methyltransferase, which is involved in the posttranslational modification that produces the modified nucleoside 1-methyladenosine in tRNAs. Modified 1-methyladenosine influences initiator methionine stability and may be involved in the replication of human

Nanjing BYabscience technology Co.,Ltd



immunodeficiency virus type 1. Alternative splicing results in multiple transcript variants. [provided by RefSeq, Jul 2013],

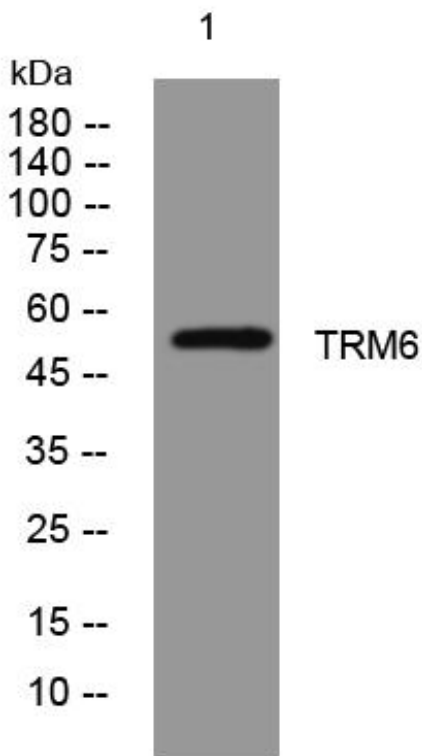
matters needing attention

Avoid repeated freezing and thawing!

Usage suggestions

This product can be used in immunological reaction related experiments. For more information, please consult technical personnel.

Products Images



Western Blot analysis of various cells using TRM6 mouse mAb