



CYH2 mouse mAb

Catalog No	BYmab-11521
Isotype	IgG
Reactivity	Human; Mouse;Rat
Applications	WB
Gene Name	CYTH2 ARNO PSCD2 PSCD2L
Protein Name	CYH2
Immunogen	Synthesized peptide derived from human CYH2 AA range: 156-206
Specificity	This antibody detects endogenous levels of CYH2 at Human/Mouse/Rat
Formulation	Liquid in PBS containing 50% glycerol, 0.5% BSA and 0.02% sodium azide.
Source	Monoclonal, Mouse,IgG
Purification	The antibody was affinity-purified from mouse antiserum by affinity-chromatography using epitope-specific immunogen.
Dilution	WB 1:500-2000
Concentration	1 mg/ml
Purity	≥90%
Storage Stability	-20°C/1 year
Synonyms	
Observed Band	
Cell Pathway	Cell membrane ; Peripheral membrane protein . Cytoplasm . Cell projection . Cell projection, growth cone . Cell junction, tight junction . Cell junction, adherens junction . Both isoform 1 and isoform 2 are recruited to the cell membrane through its association with ARL4A, ARL4C and ARL4D. They require also interaction with phosphoinositides for targeting to plasma membrane (PubMed:17398095). In differentiating neuroblastoma cells, colocalizes with CCDC120 in both neurite shaft and growth cone areas. .
Tissue Specificity	Widely expressed.
Function	function:Promotes guanine-nucleotide exchange on ARF1, ARF3 and ARF6. Promotes the activation of ARF through replacement of GDP with GTP.,similarity:Contains 1 PH domain.,similarity:Contains 1 SEC7 domain.,subunit:Heteromer. Composed of GRASP, CYTH2 and at least one GRM1.,tissue specificity:Ubiquitous.,

Nanjing BYabscience technology Co.,Ltd

网址: www.njbybio.com

官方热线: 025-5229-8998

监督电话: 15950492658



Background

The protein encoded by this gene is a member of the PSCD family. Members of this family have identical structural organization that consists of an N-terminal coiled-coil motif, a central Sec7 domain, and a C-terminal pleckstrin homology (PH) domain. The coiled-coil motif is involved in homodimerization, the Sec7 domain contains guanine-nucleotide exchange protein (GEP) activity, and the PH domain interacts with phospholipids and is responsible for association of PSCDs with membranes. Members of this family appear to mediate the regulation of protein sorting and membrane trafficking. The encoded protein exhibits GEP activity in vitro with ARF1, ARF3, and ARF6 and is 83% homologous to CYTH1. Two transcript variants encoding different isoforms have been found for this gene. [provided by RefSeq, Aug 2008],

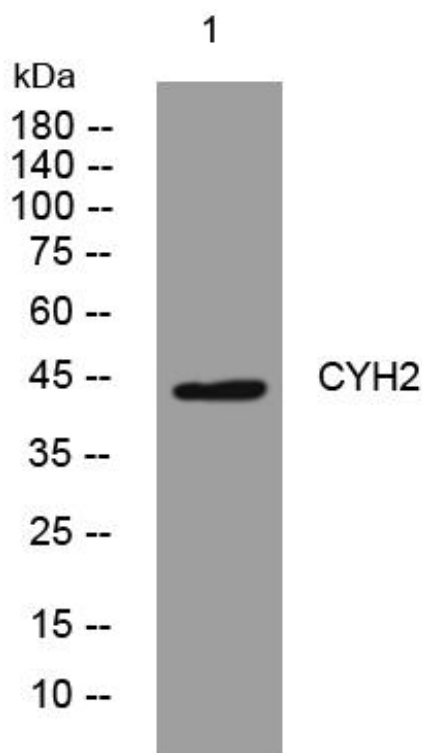
matters needing attention

Avoid repeated freezing and thawing!

Usage suggestions

This product can be used in immunological reaction related experiments. For more information, please consult technical personnel.

Products Images



Western Blot analysis of various cells using CYH2 mouse mAb