



EGFL6 mouse mAb

| | |
|---------------------------|--|
| Catalog No | BYmab-11517 |
| Isotype | IgG |
| Reactivity | Human; Mouse |
| Applications | WB |
| Gene Name | EGFL6 MAEG PP648 UNQ281/PRO320 |
| Protein Name | EGFL6 |
| Immunogen | Synthesized peptide derived from human EGFL6 AA range: 144-194 |
| Specificity | This antibody detects endogenous levels of EGFL6 at Human/Mouse |
| Formulation | Liquid in PBS containing 50% glycerol, 0.5% BSA and 0.02% sodium azide. |
| Source | Monoclonal, Mouse,IgG |
| Purification | The antibody was affinity-purified from mouse antiserum by affinity-chromatography using epitope-specific immunogen. |
| Dilution | WB 1:500-2000 |
| Concentration | 1 mg/ml |
| Purity | ≥90% |
| Storage Stability | -20°C/1 year |
| Synonyms | |
| Observed Band | |
| Cell Pathway | Secreted, extracellular space, extracellular matrix, basement membrane . |
| Tissue Specificity | |
| Function | developmental stage:Only detected in fetal tissues.,function:May bind integrin alpha-8/beta-1 and play a role in hair follicle morphogenesis. Promotes matrix assembly.,similarity:Belongs to the nephronectin family.,similarity:Contains 1 MAM domain.,similarity:Contains 5 EGF-like domains., |
| Background | This gene encodes a member of the epidermal growth factor (EGF) repeat superfamily. Members of this superfamily are characterized by the presence of EGF-like repeats and are often involved in the regulation of cell cycle, proliferation, and developmental processes. The gene product contains a signal peptide, suggesting that it is secreted; an EGF repeat region consisting of 4 complete EGF-like repeats and 1 partial EGF-like repeat, 3 of which have a calcium-binding consensus sequence; an arg-gly-asp integrin association motif; |

Nanjing BYabscience technology Co.,Ltd



and a MAM domain, which is believed to have an adhesive function. This gene is expressed early during development, and its expression has been detected in lung and meningioma tumors. [provided by RefSeq, Jul 2008],

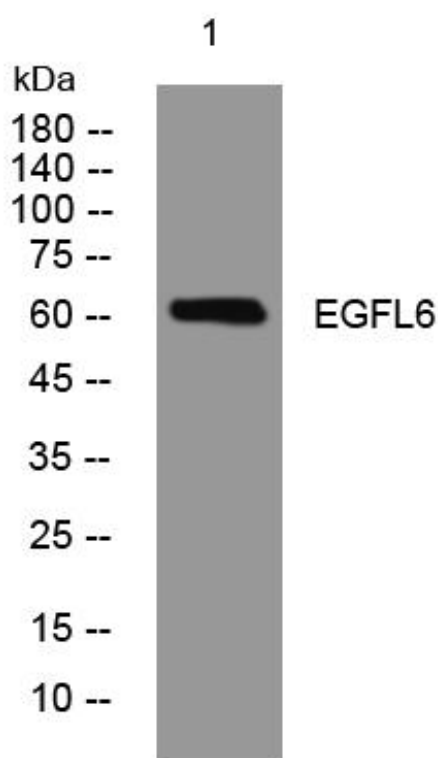
matters needing attention

Avoid repeated freezing and thawing!

Usage suggestions

This product can be used in immunological reaction related experiments. For more information, please consult technical personnel.

Products Images



Western Blot analysis of various cells using EGFL6 mouse mAb