



DMP4 mouse mAb

Catalog No	BYmab-11508
Isotype	IgG
Reactivity	Human; Mouse
Applications	WB
Gene Name	FAM20C DMP4
Protein Name	DMP4
Immunogen	Synthesized peptide derived from human DMP4 AA range: 328-378
Specificity	This antibody detects endogenous levels of DMP4 at Human/Mouse
Formulation	Liquid in PBS containing 50% glycerol, 0.5% BSA and 0.02% sodium azide.
Source	Monoclonal, Mouse,IgG
Purification	The antibody was affinity-purified from mouse antiserum by affinity-chromatography using epitope-specific immunogen.
Dilution	WB 1:500-2000
Concentration	1 mg/ml
Purity	≥90%
Storage Stability	-20°C/1 year
Synonyms	
Observed Band	
Cell Pathway	Secreted . Golgi apparatus .
Tissue Specificity	Widely expressed.
Function	disease:Defects in FAM20C are the cause of Raine syndrome (RNS) [MIM:259775]. RNS is an autosomal recessive osteosclerotic bone dysplasia with neonatal lethal outcome. Clinical features include generalized osteosclerosis, craniofacial dysplasia and microcephaly.,function:Calcium-binding protein which may play a role in dentin mineralization.,similarity:Belongs to the FAM20 family.,tissue specificity:Widely expressed.,
Background	This gene encodes a member of the family of secreted protein kinases. The encoded protein binds calcium and phosphorylates proteins involved in bone mineralization. Mutations in this gene are associated with the autosomal recessive disorder Raine syndrome. [provided by RefSeq, Apr 2014],

Nanjing BYabscience technology Co.,Ltd



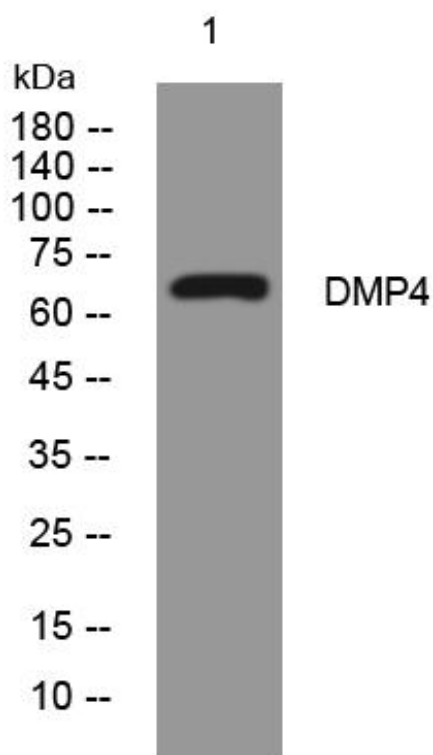
matters needing attention

Avoid repeated freezing and thawing!

Usage suggestions

This product can be used in immunological reaction related experiments. For more information, please consult technical personnel.

Products Images



Western Blot analysis of various cells using DMP4 mouse mAb