



GKN1 mouse mAb

| | |
|---------------------------|---|
| Catalog No | BYmab-11507 |
| Isotype | IgG |
| Reactivity | Human; Mouse |
| Applications | WB |
| Gene Name | GKN1 AMP18 CA11 UNQ489/PRO1005 |
| Protein Name | GKN1 |
| Immunogen | Synthesized peptide derived from human GKN1 AA range: 47-97 |
| Specificity | This antibody detects endogenous levels of GKN1 at Human/Mouse |
| Formulation | Liquid in PBS containing 50% glycerol, 0.5% BSA and 0.02% sodium azide. |
| Source | Monoclonal, Mouse,IgG |
| Purification | The antibody was affinity-purified from mouse antiserum by affinity-chromatography using epitope-specific immunogen. |
| Dilution | WB 1:500-2000 |
| Concentration | 1 mg/ml |
| Purity | ≥90% |
| Storage Stability | -20°C/1 year |
| Synonyms | |
| Observed Band | |
| Cell Pathway | Secreted . Cytoplasmic granule . Golgi apparatus . Shows abundant granular cytoplasmic staining, with perinuclear accentuation suggestive of the Golgi apparatus. . |
| Tissue Specificity | Expressed in stomach (at protein level). No expression is detected in cancer tissue or gastric cancer cell lines. |
| Function | caution:It is uncertain whether Met-1 or Met-15 is the initiator.,function:Has mitogenic activity and may be involved in maintaining the integrity of the gastric mucosal epithelium.,similarity:Belongs to the gastrophilic family.,similarity:Contains 1 BRICHOS domain.,tissue specificity:Expressed in stomach. No expression is detected in cancer tissue or gastric cancer cell lines., |
| Background | The protein encoded by this gene is found to be down-regulated in human gastric cancer tissue as compared to normal gastric mucosa. [provided by RefSeq, Jul 2008], |

Nanjing BYabscience technology Co.,Ltd

网址: www.njbybio.com

官方热线: 025-5229-8998

监督电话: 15950492658



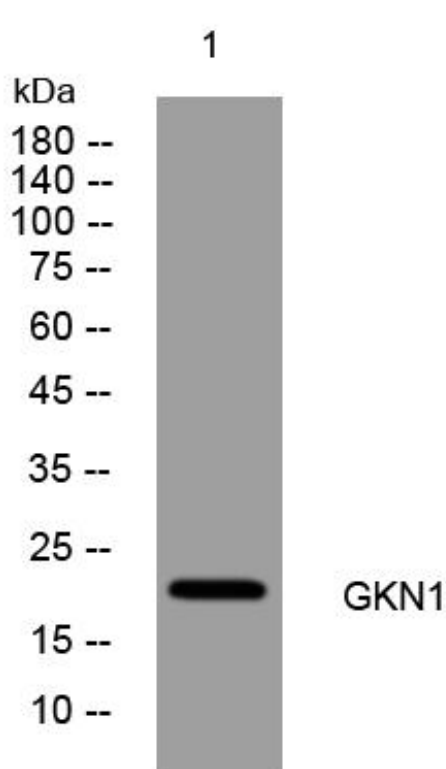
matters needing attention

Avoid repeated freezing and thawing!

Usage suggestions

This product can be used in immunological reaction related experiments. For more information, please consult technical personnel.

Products Images



Western Blot analysis of various cells using GKN1 mouse mAb