



FKBP7 mouse mAb

Catalog No	BYmab-11501
Isotype	IgG
Reactivity	Human; Mouse
Applications	WB
Gene Name	FKBP7 FKBP23 UNQ670/PRO1304
Protein Name	FKBP7
Immunogen	Synthesized peptide derived from human FKBP7 AA range: 189-239
Specificity	This antibody detects endogenous levels of FKBP7 at Human/Mouse
Formulation	Liquid in PBS containing 50% glycerol, 0.5% BSA and 0.02% sodium azide.
Source	Monoclonal, Mouse,IgG
Purification	The antibody was affinity-purified from mouse antiserum by affinity-chromatography using epitope-specific immunogen.
Dilution	WB 1:500-2000
Concentration	1 mg/ml
Purity	≥90%
Storage Stability	-20°C/1 year
Synonyms	
Observed Band	
Cell Pathway	Endoplasmic reticulum lumen .
Tissue Specificity	
Function	catalytic activity:Peptidylproline (omega=180) = peptidylproline (omega=0).,function:PPlases accelerate the folding of proteins during protein synthesis.,miscellaneous:Binds calcium.,PTM:Glycosylated.,similarity:Contains 1 PPlase FKBP-type domain.,similarity:Contains 2 EF-hand domains.,
Background	The protein encoded by this gene belongs to the FKBP-type peptidyl-prolyl cis/trans isomerase (PPlase) family. Members of this family exhibit PPlase activity and function as molecular chaperones. A similar protein in mouse is located in the endoplasmic reticulum and binds calcium. [provided by RefSeq, Jul 2008],
matters needing attention	Avoid repeated freezing and thawing!

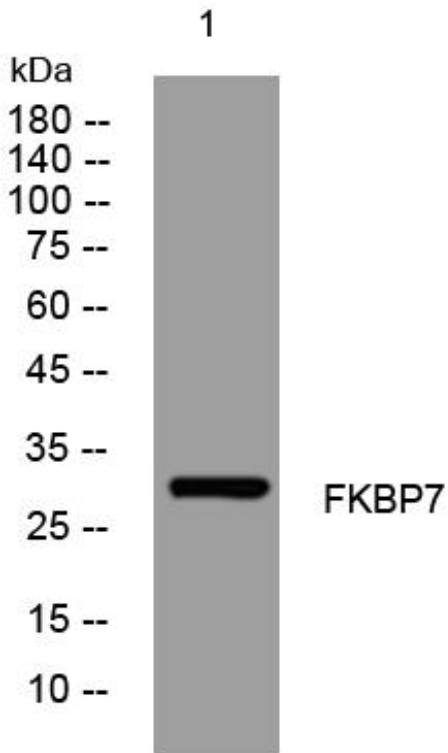
Nanjing BYabscience technology Co.,Ltd



Usage suggestions

This product can be used in immunological reaction related experiments. For more information, please consult technical personnel.

Products Images



Western Blot analysis of various cells using FKBP7 mouse mAb

Nanjing BYabscience technology Co.,Ltd

网址: www.njbybio.com

官方热线: 025-5229-8998

监督电话: 15950492658