



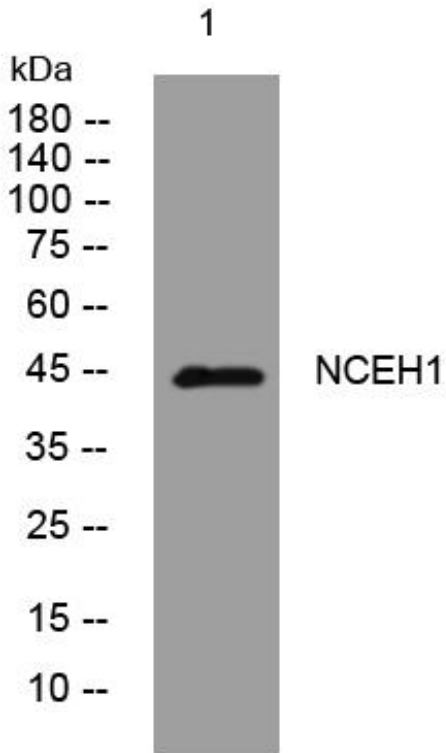
NCEH1 mouse mAb

Catalog No	BYmab-11477
Isotype	IgG
Reactivity	Human; Mouse;Rat
Applications	WB
Gene Name	NCEH1 AADACL1 KIAA1363
Protein Name	NCEH1
Immunogen	Synthesized peptide derived from human NCEH1 AA range: 8-58
Specificity	This antibody detects endogenous levels of NCEH1 at Human/Mouse/Rat
Formulation	Liquid in PBS containing 50% glycerol, 0.5% BSA and 0.02% sodium azide.
Source	Monoclonal, Mouse,IgG
Purification	The antibody was affinity-purified from mouse antiserum by affinity-chromatography using epitope-specific immunogen.
Dilution	WB 1:500-2000
Concentration	1 mg/ml
Purity	≥90%
Storage Stability	-20°C/1 year
Synonyms	
Observed Band	
Cell Pathway	Cell membrane ; Single-pass type II membrane protein . Microsome .
Tissue Specificity	Expressed in monocyte-derived macrophages. Up-regulated in invasive melanoma and breast carcinoma cell lines.
Function	
Background	
matters needing attention	Avoid repeated freezing and thawing!
Usage suggestions	This product can be used in immunological reaction related experiments. For more information, please consult technical personnel.

Nanjing BYabscience technology Co.,Ltd



Products Images



Western Blot analysis of various cells using NCEH1 mouse mAb