



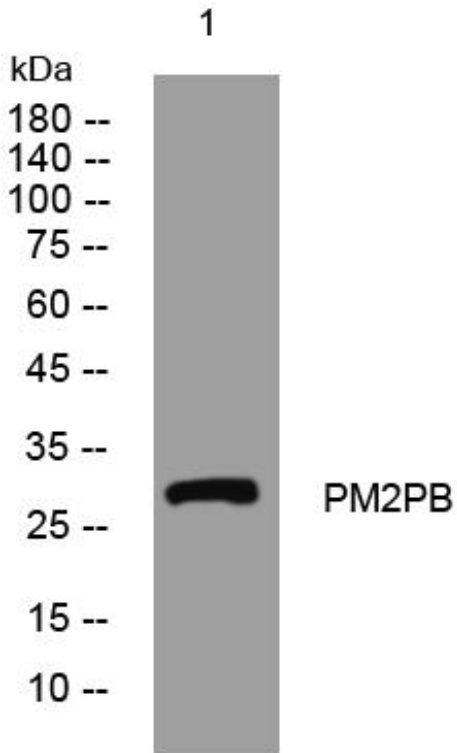
PM2PB mouse mAb

Catalog No	BYmab-11462
Isotype	IgG
Reactivity	Human;Rat;Mouse;
Applications	WB
Gene Name	PMS2P11 PMS2L11 PMSR6
Protein Name	PM2PB
Immunogen	Synthesized peptide derived from human PM2PB AA range: 218-268
Specificity	This antibody detects endogenous levels of PM2PB at Human
Formulation	Liquid in PBS containing 50% glycerol, 0.5% BSA and 0.02% sodium azide.
Source	Monoclonal, Mouse,IgG
Purification	The antibody was affinity-purified from mouse antiserum by affinity-chromatography using epitope-specific immunogen.
Dilution	WB 1:500-2000
Concentration	1 mg/ml
Purity	≥90%
Storage Stability	-20°C/1 year
Synonyms	
Observed Band	
Cell Pathway	MutLalpha complex,
Tissue Specificity	
Function	
Background	
matters needing attention	Avoid repeated freezing and thawing!
Usage suggestions	This product can be used in immunological reaction related experiments. For more information, please consult technical personnel.

Nanjing BYabscience technology Co.,Ltd



Products Images



Western Blot analysis of various cells using PM2PB mouse mAb

Nanjing BYabs science technology Co.,Ltd

网址: www.njbybio.com

官方热线: 025-5229-8998

监督电话: 15950492658