



S26A7 mouse mAb

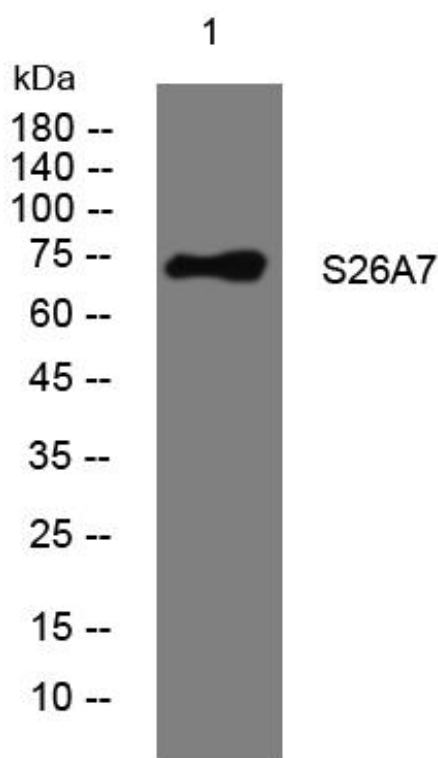
Catalog No	BYmab-11460
Isotype	IgG
Reactivity	Human; Mouse
Applications	WB
Gene Name	SLC26A7 SUT2
Protein Name	S26A7
Immunogen	Synthesized peptide derived from human S26A7 AA range: 595-645
Specificity	This antibody detects endogenous levels of S26A7 at Human/Mouse
Formulation	Liquid in PBS containing 50% glycerol, 0.5% BSA and 0.02% sodium azide.
Source	Monoclonal, Mouse,IgG
Purification	The antibody was affinity-purified from mouse antiserum by affinity-chromatography using epitope-specific immunogen.
Dilution	WB 1:500-2000
Concentration	1 mg/ml
Purity	≥90%
Storage Stability	-20°C/1 year
Synonyms	
Observed Band	
Cell Pathway	Recycling endosome membrane ; Multi-pass membrane protein . Expressed in the cytoplasm in recycling endosomes of medullary collecting duct cells and in acid-secreting gastric parietal cells. Targeted to the basolateral membrane in hypertonicity and potassium depletion. .
Tissue Specificity	Expressed in tonsillar high endothelial venule endothelial cells (HEVEC), placenta and in testis, expressed in a subgroup of basal cells in the epididymal ducts.
Function	function:Acts as a sodium-independent DIDS-sensitive anion exchanger mediating bicarbonate, chloride, sulfate and oxalate transport. May play a role in the maintenance of the electrolyte and acid-base homeostasis in the kidney, by acting as a distal excretory segment-specific anion exchanger. Plays a major role in gastric acid secretion.,miscellaneous:Is active at both alkaline and acidic pH. Activity is inhibited by 4,4'-Di-isothiocyanatostilbene-2,2'-disulfonic acid (DIDS - an inhibitor of several anionic channels and transporters).,similarity:Belongs to the SLC26A/SulP transporter (TC 2.A.53) family.,similarity:Contains 1 STAS domain.,subcellular location:Expressed in the cytoplasm in recycling endosomes

Nanjing BYabscience technology Co.,Ltd



	of medullary collecting duct cells and in acid-secreting gastric parietal cells. Targeted to the basolateral membrane in hypertonicity and potassium depletion.,tissue specificity:Expr
Background	This gene is one member of a family of sulfate/anion transporter genes. Family members are well conserved in gene structure and protein length yet have markedly different tissue expression patterns. This gene has abundant and specific expression in the kidney. Alternatively spliced transcript variants that encode different isoforms have been described. [provided by RefSeq, Aug 2013],
matters needing attention	Avoid repeated freezing and thawing!
Usage suggestions	This product can be used in immunological reaction related experiments. For more information, please consult technical personnel.

Products Images



Western Blot analysis of various cells using S26A7 mouse mAb