



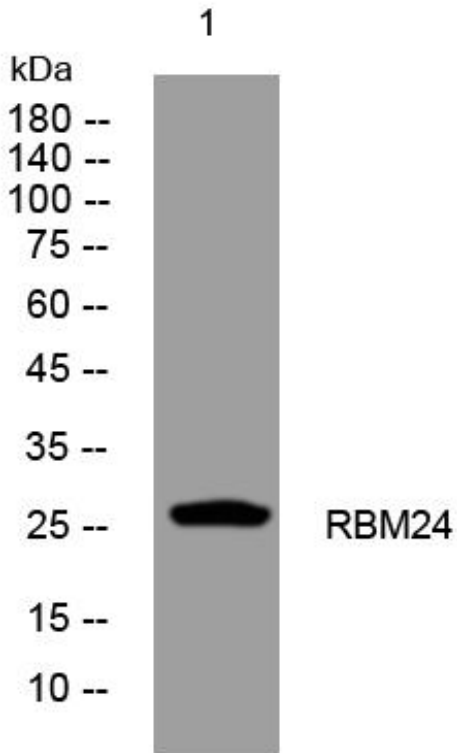
RBM24 mouse mAb

Catalog No	BYmab-11456
Isotype	IgG
Reactivity	Human; Mouse
Applications	WB
Gene Name	RBM24 RNPC6
Protein Name	RBM24
Immunogen	Synthesized peptide derived from human RBM24 AA range: 48-98
Specificity	This antibody detects endogenous levels of RBM24 at Human/Mouse
Formulation	Liquid in PBS containing 50% glycerol, 0.5% BSA and 0.02% sodium azide.
Source	Monoclonal, Mouse,IgG
Purification	The antibody was affinity-purified from mouse antiserum by affinity-chromatography using epitope-specific immunogen.
Dilution	WB 1:500-2000
Concentration	1 mg/ml
Purity	≥90%
Storage Stability	-20°C/1 year
Synonyms	
Observed Band	
Cell Pathway	Nucleus . Cytoplasm .
Tissue Specificity	Expressed in fetal and adult heart and skeletal muscles (PubMed:22345307, PubMed:25313962).
Function	similarity:Contains 1 RRM (RNA recognition motif) domain.,
Background	
matters needing attention	Avoid repeated freezing and thawing!
Usage suggestions	This product can be used in immunological reaction related experiments. For more information, please consult technical personnel.

Nanjing BYabscience technology Co.,Ltd



Products Images



Western Blot analysis of various cells using RBM24 mouse mAb