



DRAM2 mouse mAb

Catalog No	BYmab-11445
Isotype	IgG
Reactivity	Human; Mouse;Rat
Applications	WB
Gene Name	DRAM2 TMEM77 PSEC0031 UNQ154/PRO180
Protein Name	DRAM2
Immunogen	Synthesized peptide derived from human DRAM2 AA range: 57-107
Specificity	This antibody detects endogenous levels of DRAM2 at Human/Mouse/Rat
Formulation	Liquid in PBS containing 50% glycerol, 0.5% BSA and 0.02% sodium azide.
Source	Monoclonal, Mouse,IgG
Purification	The antibody was affinity-purified from mouse antiserum by affinity-chromatography using epitope-specific immunogen.
Dilution	WB 1:500-2000
Concentration	1 mg/ml
Purity	≥90%
Storage Stability	-20°C/1 year
Synonyms	
Observed Band	
Cell Pathway	Lysosome membrane ; Multi-pass membrane protein . Photoreceptor inner segment . Apical cell membrane . Localized to photoreceptor inner segments and to the apical surface of retinal pigment epithelial cells. .
Tissue Specificity	Expression is down-regulated in ovarian tumors (at protein level). Widely expressed with highest levels in placenta and heart. Expressed in the retina. Not detected in brain or thymus.
Function	
Background	
matters needing attention	Avoid repeated freezing and thawing!

Nanjing BYabscience technology Co.,Ltd

网址: www.njbybio.com

官方热线: 025-5229-8998

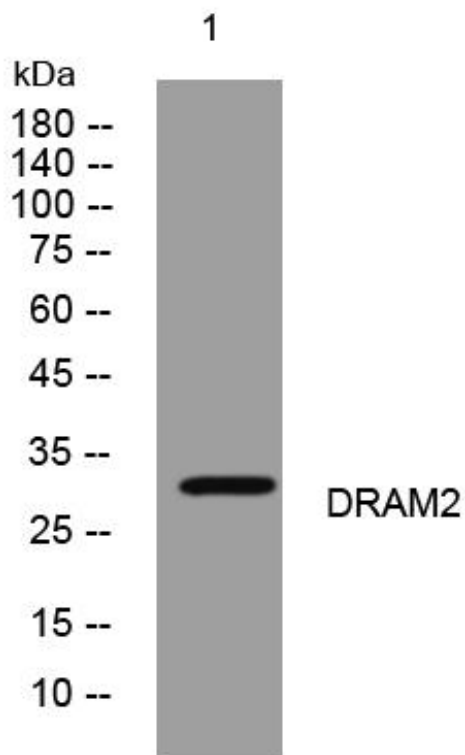
监督电话: 15950492658



Usage suggestions

This product can be used in immunological reaction related experiments. For more information, please consult technical personnel.

Products Images



Western Blot analysis of various cells using DRAM2 mouse mAb

Nanjing BYabscience technology Co.,Ltd

网址: www.njbybio.com

官方热线: 025-5229-8998

监督电话: 15950492658