



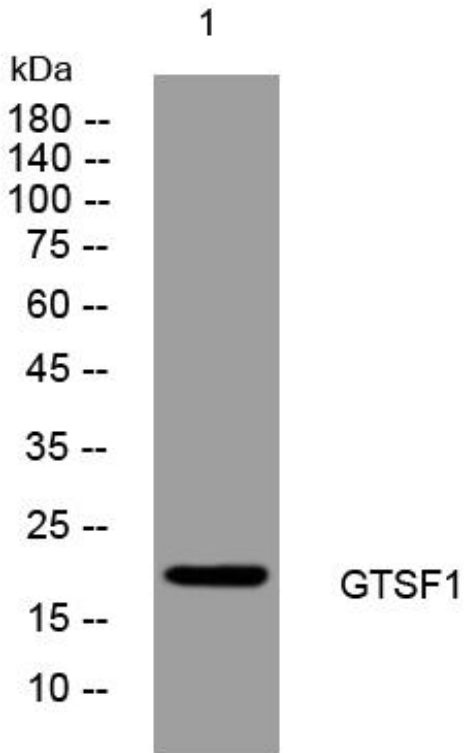
GTSF1 mouse mAb

Catalog No	BYmab-11441
Isotype	IgG
Reactivity	Human; Mouse
Applications	WB
Gene Name	GTSF1 FAM112B
Protein Name	GTSF1
Immunogen	Synthesized peptide derived from human GTSF1 AA range: 41-91
Specificity	This antibody detects endogenous levels of GTSF1 at Human/Mouse
Formulation	Liquid in PBS containing 50% glycerol, 0.5% BSA and 0.02% sodium azide.
Source	Monoclonal, Mouse,IgG
Purification	The antibody was affinity-purified from mouse antiserum by affinity-chromatography using epitope-specific immunogen.
Dilution	WB 1:500-2000
Concentration	1 mg/ml
Purity	≥90%
Storage Stability	-20°C/1 year
Synonyms	
Observed Band	
Cell Pathway	Cytoplasm .
Tissue Specificity	
Function	similarity:Belongs to the UPF0224 (FAM112) family.,similarity:Contains 1 CHHC-type zinc finger.,
Background	
matters needing attention	Avoid repeated freezing and thawing!
Usage suggestions	This product can be used in immunological reaction related experiments. For more information, please consult technical personnel.

Nanjing BYabscience technology Co.,Ltd



Products Images



Western Blot analysis of various cells using GTSF1 mouse mAb