



SPAT2 mouse mAb

Catalog No	BYmab-11437
Isotype	IgG
Reactivity	Human;Rat;Mouse;
Applications	WB
Gene Name	SPATA2 KIAA0757 PD1
Protein Name	SPAT2
Immunogen	Synthesized peptide derived from human SPAT2 AA range: 119-169
Specificity	This antibody detects endogenous levels of SPAT2 at Human
Formulation	Liquid in PBS containing 50% glycerol, 0.5% BSA and 0.02% sodium azide.
Source	Monoclonal, Mouse,IgG
Purification	The antibody was affinity-purified from mouse antiserum by affinity-chromatography using epitope-specific immunogen.
Dilution	WB 1:500-2000
Concentration	1 mg/ml
Purity	≥90%
Storage Stability	-20°C/1 year
Synonyms	
Observed Band	
Cell Pathway	Cytoplasm . Nucleus . Detected in the tubular compartment of the testis and, in the cytoplasm of the Sertoli cells. .
Tissue Specificity	Present at high level in Sertoli cells, but not detected in spermatogenic cells (at protein level) (PubMed:10222154, PubMed:11079456). Low expression in spleen, thymus and prostate (PubMed:10222154).
Function	function:May have a role in the regulation of spermatogenesis.,similarity:Belongs to the SPATA2 family.,tissue specificity:Highly expressed in Sertoli cells, but not detected in spermatogenic cells. Low expression in spleen, thymus and prostate.,
Background	
matters needing attention	Avoid repeated freezing and thawing!

Nanjing BYabscience technology Co.,Ltd

网址: www.njbybio.com

官方热线: 025-5229-8998

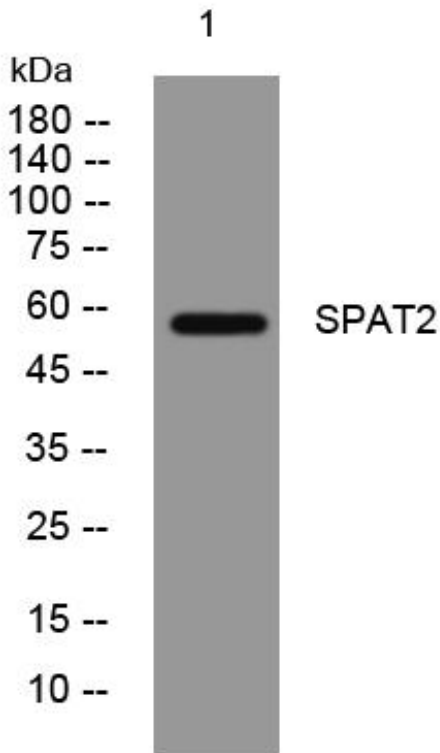
监督电话: 15950492658



Usage suggestions

This product can be used in immunological reaction related experiments. For more information, please consult technical personnel.

Products Images



Western Blot analysis of various cells using SPAT2 mouse mAb

Nanjing BYabscience technology Co.,Ltd

网址: www.njbybio.com

官方热线: 025-5229-8998

监督电话: 15950492658