



NCK5L mouse mAb

Catalog No	BYmab-11416
Isotype	IgG
Reactivity	Human; Mouse
Applications	WB
Gene Name	NCKAP5L KIAA1602 FP1193
Protein Name	NCK5L
Immunogen	Synthesized peptide derived from human NCK5L AA range: 261-311
Specificity	This antibody detects endogenous levels of NCK5L at Human/Mouse
Formulation	Liquid in PBS containing 50% glycerol, 0.5% BSA and 0.02% sodium azide.
Source	Monoclonal, Mouse,IgG
Purification	The antibody was affinity-purified from mouse antiserum by affinity-chromatography using epitope-specific immunogen.
Dilution	WB 1:500-2000
Concentration	1 mg/ml
Purity	≥90%
Storage Stability	-20°C/1 year
Synonyms	
Observed Band	
Cell Pathway	Cytoplasm, cytoskeleton, microtubule organizing center, centrosome . Localizes to microtubule plus ends (PubMed:26485573, PubMed:26482847). Associates with centrosomes during interphase, but dissociates from these structures from the onset of mitosis (PubMed:26549230). .
Tissue Specificity	
Function	
Background	
matters needing attention	Avoid repeated freezing and thawing!

Nanjing BYabscience technology Co.,Ltd

网址: www.njbybio.com

官方热线: 025-5229-8998

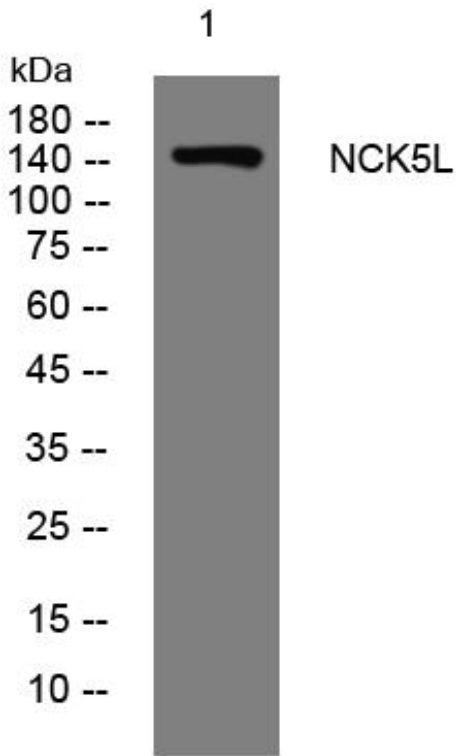
监督电话: 15950492658



Usage suggestions

This product can be used in immunological reaction related experiments. For more information, please consult technical personnel.

Products Images



Western Blot analysis of various cells using NCK5L mouse mAb

Nanjing BYabs science technology Co.,Ltd

网址: www.njbybio.com

官方热线: 025-5229-8998

监督电话: 15950492658