



KCTD3 mouse mAb

| | |
|---------------------------|---|
| Catalog No | BYmab-11415 |
| Isotype | IgG |
| Reactivity | Human; Mouse |
| Applications | WB |
| Gene Name | KCTD3 |
| Protein Name | KCTD3 |
| Immunogen | Synthesized peptide derived from human KCTD3 AA range: 360-410 |
| Specificity | This antibody detects endogenous levels of KCTD3 at Human/Mouse |
| Formulation | Liquid in PBS containing 50% glycerol, 0.5% BSA and 0.02% sodium azide. |
| Source | Monoclonal, Mouse,IgG |
| Purification | The antibody was affinity-purified from mouse antiserum by affinity-chromatography using epitope-specific immunogen. |
| Dilution | WB 1:500-2000 |
| Concentration | 1 mg/ml |
| Purity | ≥90% |
| Storage Stability | -20°C/1 year |
| Synonyms | |
| Observed Band | |
| Cell Pathway | Cell membrane . |
| Tissue Specificity | Broadly expressed in normal tissues. |
| Function | miscellaneous:Reacts with sera from 5-25 per cent of cancer patients but not with sera from normal donors. Seventy per cent of renal cancer patients have antibodies against one or a panel of these antigens.,sequence caution:Contaminating sequence. Potential poly-A sequence.,similarity:Belongs to the KCTD3 family.,similarity:Contains 1 BTB (POZ) domain.,similarity:Contains 5 WD repeats.,tissue specificity:Broadly expressed in normal tissues., |
| Background | This gene encodes a member of the potassium channel tetramerization-domain containing (KCTD) protein family. Members of this protein family regulate the biophysical characteristics of ion channels. In mouse, this protein interacts with hyperpolarization-activated cyclic nucleotide-gated channel complex 3 and enhances its cell surface expression and current density. Alternative splicing |

Nanjing BYabscience technology Co.,Ltd



results in multiple transcript variants. [provided by RefSeq, Feb 2016],

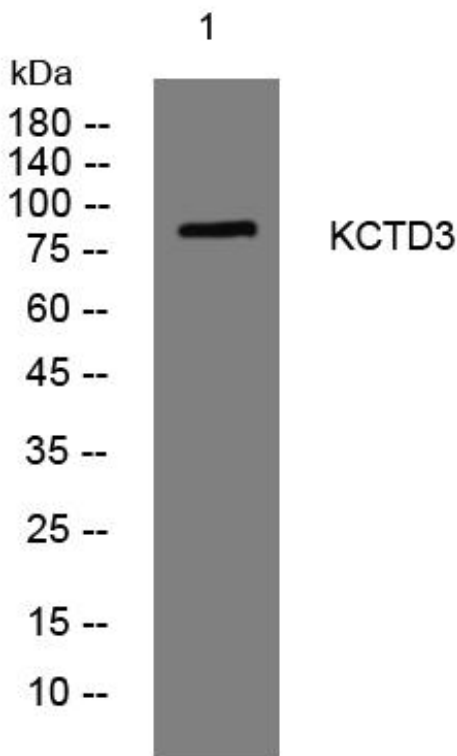
matters needing attention

Avoid repeated freezing and thawing!

Usage suggestions

This product can be used in immunological reaction related experiments. For more information, please consult technical personnel.

Products Images



Western Blot analysis of various cells using KCTD3 mouse mAb

Nanjing BYabscience technology Co.,Ltd

网址: www.njbybio.com

官方热线: 025-5229-8998

监督电话: 15950492658