



# MANEL mouse mAb

Catalog No	BYmab-11409
Isotype	IgG
Reactivity	Human; Mouse
Applications	WB
Gene Name	MANEAL
Protein Name	MANEL
Immunogen	Synthesized peptide derived from human MANEL AA range: 218-268
Specificity	This antibody detects endogenous levels of MANEL at Human/Mouse
Formulation	Liquid in PBS containing 50% glycerol, 0.5% BSA and 0.02% sodium azide.
Source	Monoclonal, Mouse,IgG
Purification	The antibody was affinity-purified from mouse antiserum by affinity-chromatography using epitope-specific immunogen.
Dilution	WB 1:500-2000
Concentration	1 mg/ml
Purity	≥90%
Storage Stability	-20°C/1 year
Synonyms	
Observed Band	
Cell Pathway	Golgi apparatus membrane ; Single-pass type II membrane protein .
Tissue Specificity	
Function	similarity:Belongs to the glycosyl hydrolase 99 family.,
Background	
matters needing attention	Avoid repeated freezing and thawing!
Usage suggestions	This product can be used in immunological reaction related experiments. For more information, please consult technical personnel.

Nanjing BYabscience technology Co.,Ltd

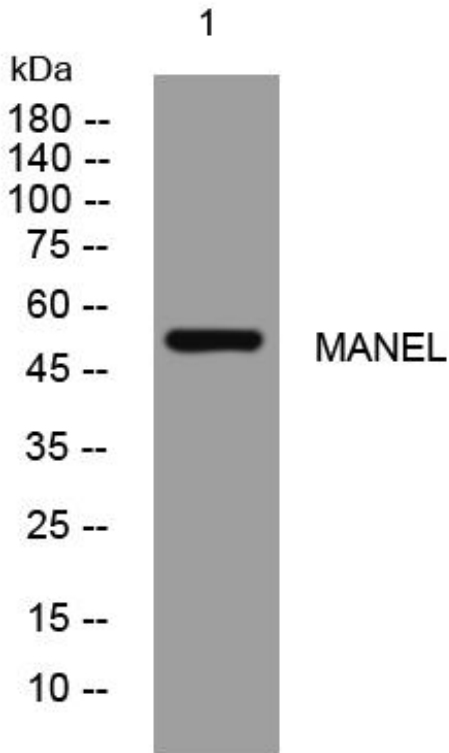
网址: [www.njbybio.com](http://www.njbybio.com)

官方热线: 025-5229-8998

监督电话: 15950492658



## Products Images



Western Blot analysis of various cells using MANEL mouse mAb