



DPEP2 mouse mAb

| | |
|---------------------------|---|
| Catalog No | BYmab-11404 |
| Isotype | IgG |
| Reactivity | Human; Mouse;Rat |
| Applications | WB |
| Gene Name | DPEP2 UNQ284/PRO323 |
| Protein Name | DPEP2 |
| Immunogen | Synthesized peptide derived from human DPEP2 AA range: 94-144 |
| Specificity | This antibody detects endogenous levels of DPEP2 at Human/Mouse/Rat |
| Formulation | Liquid in PBS containing 50% glycerol, 0.5% BSA and 0.02% sodium azide. |
| Source | Monoclonal, Mouse,IgG |
| Purification | The antibody was affinity-purified from mouse antiserum by affinity-chromatography using epitope-specific immunogen. |
| Dilution | WB 1:500-2000 |
| Concentration | 1 mg/ml |
| Purity | ≥90% |
| Storage Stability | -20°C/1 year |
| Synonyms | |
| Observed Band | |
| Cell Pathway | Membrane ; Lipid-anchor, GPI-anchor . |
| Tissue Specificity | |
| Function | catalytic activity:Hydrolysis of dipeptides.,cofactor:Zinc.,enzyme regulation:Inhibited by L-penicillamine.,function:Probable metalloprotease which hydrolyzes leukotriene D4 (LTD4) into leukotriene E4 (LTE4).,similarity:Belongs to the peptidase M19 family.,subunit:Homodimer; disulfide-linked., |
| Background | DPEP2 belongs to the membrane-bound dipeptidase (EC 3.4.13.19) family. These enzymes hydrolyze a variety of dipeptides, including leukotriene D4, the beta-lactam ring of some antibiotics, and cystinyl-bis-glycine (cys-bis-gly) formed during glutathione degradation (Habib et al., 2003 [PubMed 12738806]).[supplied by OMIM, Mar 2008], |

Nanjing BYabscience technology Co.,Ltd

网址: www.njbybio.com

官方热线: 025-5229-8998

监督电话: 15950492658



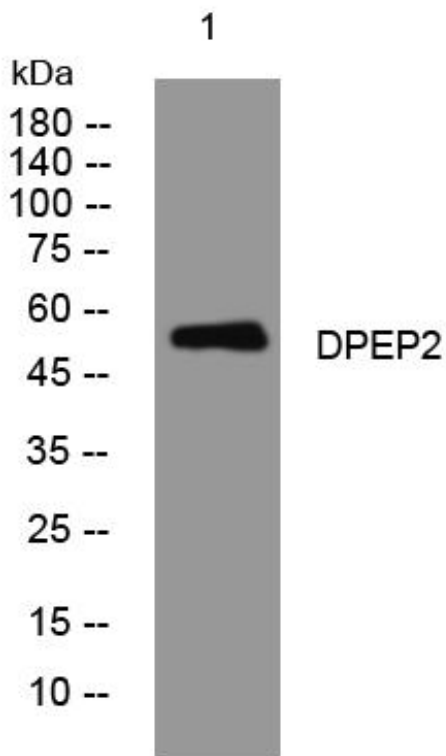
matters needing attention

Avoid repeated freezing and thawing!

Usage suggestions

This product can be used in immunological reaction related experiments. For more information, please consult technical personnel.

Products Images



Western Blot analysis of various cells using DPEP2 mouse mAb

Nanjing BYabs science technology Co.,Ltd

网址: www.njbybio.com

官方热线: 025-5229-8998

监督电话: 15950492658