



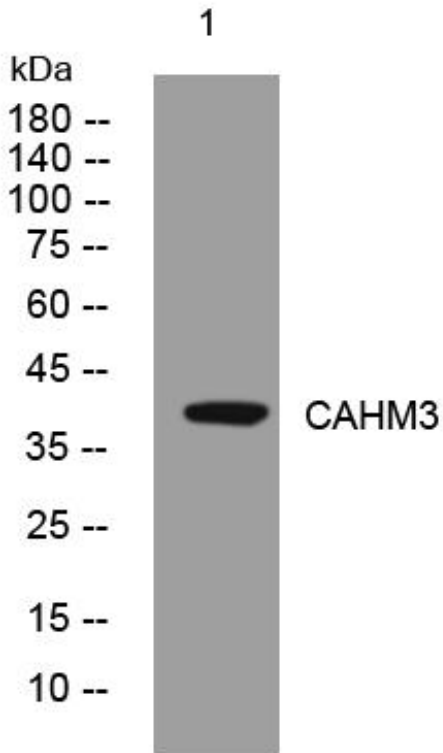
# CAHM3 mouse mAb

Catalog No	BYmab-11397
Isotype	IgG
Reactivity	Human;Rat;Mouse;
Applications	WB
Gene Name	CALHM3 FAM26A
Protein Name	CAHM3
Immunogen	Synthesized peptide derived from human CAHM3 AA range: 191-241
Specificity	This antibody detects endogenous levels of CAHM3 at Human
Formulation	Liquid in PBS containing 50% glycerol, 0.5% BSA and 0.02% sodium azide.
Source	Monoclonal, Mouse,IgG
Purification	The antibody was affinity-purified from mouse antiserum by affinity-chromatography using epitope-specific immunogen.
Dilution	WB 1:500-2000
Concentration	1 mg/ml
Purity	≥90%
Storage Stability	-20°C/1 year
Synonyms	
Observed Band	
Cell Pathway	Basolateral cell membrane ; Multi-pass membrane protein .
Tissue Specificity	Specifically expressed in circumvallate taste bud cells.
Function	similarity:Belongs to the FAM26 family.,
Background	
matters needing attention	Avoid repeated freezing and thawing!
Usage suggestions	This product can be used in immunological reaction related experiments. For more information, please consult technical personnel.

Nanjing BYabscience technology Co.,Ltd



## Products Images



Western Blot analysis of various cells using CAHM3 mouse mAb