



# RWD2B mouse mAb

Catalog No	BYmab-11395
Isotype	IgG
Reactivity	Human; Mouse
Applications	WB
Gene Name	RWDD2B C21orf6 GL011
Protein Name	RWD2B
Immunogen	Synthesized peptide derived from human RWD2B AA range: 228-278
Specificity	This antibody detects endogenous levels of RWD2B at Human/Mouse
Formulation	Liquid in PBS containing 50% glycerol, 0.5% BSA and 0.02% sodium azide.
Source	Monoclonal, Mouse,IgG
Purification	The antibody was affinity-purified from mouse antiserum by affinity-chromatography using epitope-specific immunogen.
Dilution	WB 1:500-2000
Concentration	1 mg/ml
Purity	≥90%
Storage Stability	-20°C/1 year
Synonyms	
Observed Band	
Cell Pathway	
Tissue Specificity	Ubiquitous.
Function	similarity:Contains 1 RWD domain.,tissue specificity:Ubiquitous.,
Background	
matters needing attention	Avoid repeated freezing and thawing!
Usage suggestions	This product can be used in immunological reaction related experiments. For more information, please consult technical personnel.

Nanjing BYabscience technology Co.,Ltd

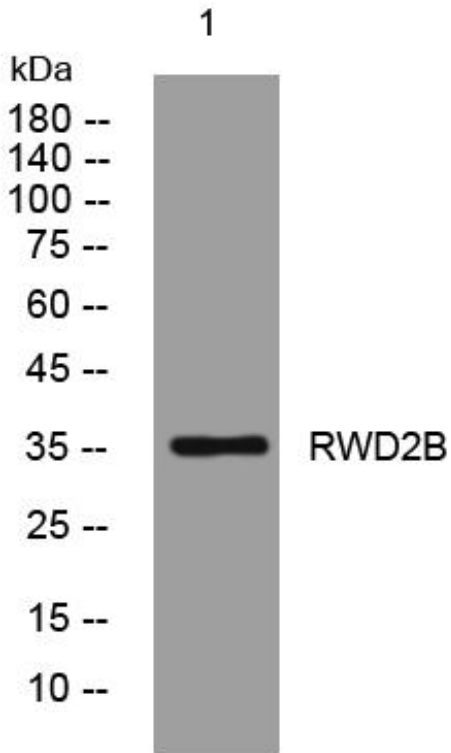
网址: [www.njbybio.com](http://www.njbybio.com)

官方热线: 025-5229-8998

监督电话: 15950492658



## Products Images



Western Blot analysis of various cells using RWD2B mouse mAb