



TM198 mouse mAb

Catalog No	BYmab-11380
Isotype	IgG
Reactivity	Human; Mouse
Applications	WB
Gene Name	TMEM198
Protein Name	TM198
Immunogen	Synthesized peptide derived from human TM198 AA range: 273-323
Specificity	This antibody detects endogenous levels of TM198 at Human/Mouse
Formulation	Liquid in PBS containing 50% glycerol, 0.5% BSA and 0.02% sodium azide.
Source	Monoclonal, Mouse,IgG
Purification	The antibody was affinity-purified from mouse antiserum by affinity-chromatography using epitope-specific immunogen.
Dilution	WB 1:500-2000
Concentration	1 mg/ml
Purity	≥90%
Storage Stability	-20°C/1 year
Synonyms	
Observed Band	
Cell Pathway	Membrane ; Multi-pass membrane protein . Cell membrane . Cytoplasmic vesicle . Largely located to vesicle-like structures. .
Tissue Specificity	
Function	similarity:Belongs to the TMEM198 family.,
Background	
matters needing attention	Avoid repeated freezing and thawing!
Usage suggestions	This product can be used in immunological reaction related experiments. For more information, please consult technical personnel.

Nanjing BYabscience technology Co.,Ltd

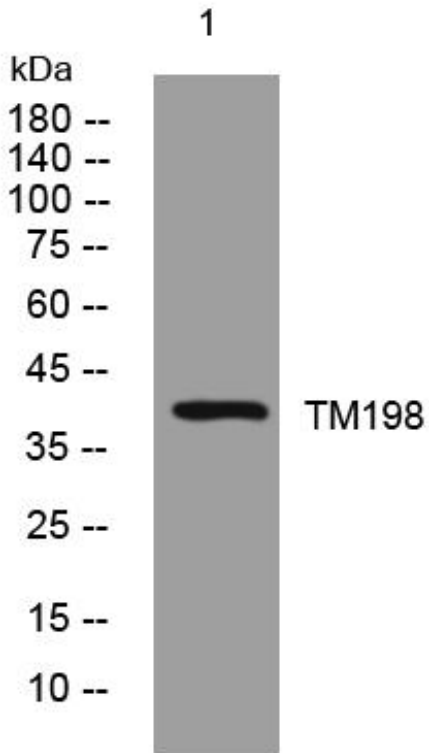
网址: www.njbybio.com

官方热线: 025-5229-8998

监督电话: 15950492658



Products Images



Western Blot analysis of various cells using TM198 mouse mAb