



L12R1 mouse mAb

Catalog No	BYmab-11373
Isotype	IgG
Reactivity	Human; Mouse
Applications	WB
Gene Name	LOH12CR1
Protein Name	L12R1
Immunogen	Synthesized peptide derived from human L12R1 AA range: 9-59
Specificity	This antibody detects endogenous levels of L12R1 at Human/Mouse
Formulation	Liquid in PBS containing 50% glycerol, 0.5% BSA and 0.02% sodium azide.
Source	Monoclonal, Mouse,IgG
Purification	The antibody was affinity-purified from mouse antiserum by affinity-chromatography using epitope-specific immunogen.
Dilution	WB 1:500-2000
Concentration	1 mg/ml
Purity	≥90%
Storage Stability	-20°C/1 year
Synonyms	
Observed Band	
Cell Pathway	Lysosome membrane ; Lipid-anchor ; Cytoplasmic side .
Tissue Specificity	Ubiquitously expressed (at protein level).
Function	similarity:Belongs to the LOH12CR1 family.,tissue specificity:Widely expressed.,
Background	
matters needing attention	Avoid repeated freezing and thawing!
Usage suggestions	This product can be used in immunological reaction related experiments. For more information, please consult technical personnel.

Nanjing BYabscience technology Co.,Ltd

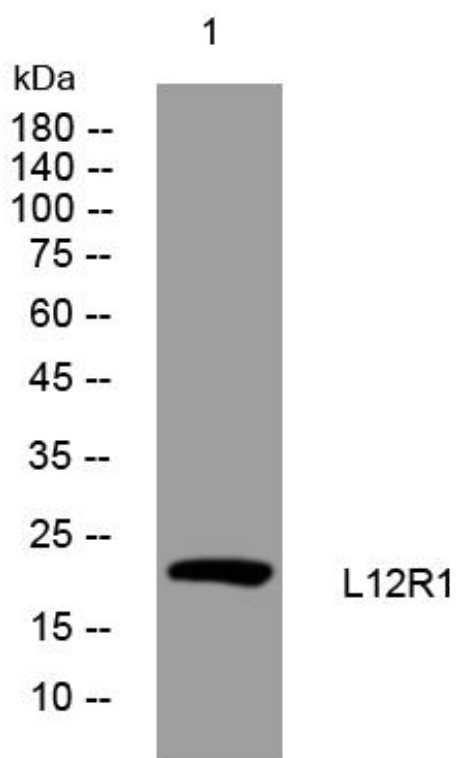
网址: www.njbybio.com

官方热线: 025-5229-8998

监督电话: 15950492658



Products Images



Western Blot analysis of various cells using L12R1 mouse mAb

Nanjing BYabs science technology Co.,Ltd

网址: www.njbybio.com

官方热线: 025-5229-8998

监督电话: 15950492658