



FBX6 mouse mAb

| | |
|--------------------|--|
| Catalog No | BYmab-11366 |
| Isotype | IgG |
| Reactivity | Human; Mouse;Rat |
| Applications | WB |
| Gene Name | FBXO6 FBG2 FBS2 FBX6 |
| Protein Name | FBX6 |
| Immunogen | Synthesized peptide derived from human FBX6 AA range: 30-80 |
| Specificity | This antibody detects endogenous levels of FBX6 at Human/Mouse/Rat |
| Formulation | Liquid in PBS containing 50% glycerol, 0.5% BSA and 0.02% sodium azide. |
| Source | Monoclonal, Mouse,IgG |
| Purification | The antibody was affinity-purified from mouse antiserum by affinity-chromatography using epitope-specific immunogen. |
| Dilution | WB 1:500-2000 |
| Concentration | 1 mg/ml |
| Purity | ≥90% |
| Storage Stability | -20°C/1 year |
| Synonyms | |
| Observed Band | |
| Cell Pathway | Cytoplasm . |
| Tissue Specificity | |
| Function | function:Probably recognizes and binds to some phosphorylated proteins and promotes their ubiquitination and degradation.,online information:hFBG2,similarity:Contains 1 F-box domain.,similarity:Contains 1 FBA (F-box associated) domain.,subunit:Part of a SCF (SKP1-cullin-F-box) protein ligase complex., |
| Background | This gene encodes a member of the F-box protein family which is characterized by an approximately 40 amino acid motif, the F-box. The F-box proteins constitute one of the four subunits of the ubiquitin protein ligase complex called SCFs (SKP1-cullin-F-box), which function in phosphorylation-dependent ubiquitination. The F-box proteins are divided into 3 classes: Fbws containing WD-40 domains, Fbls containing leucine-rich repeats, and Fbxs containing either different |

Nanjing BYabscience technology Co.,Ltd



protein-protein interaction modules or no recognizable motifs. The protein encoded by this gene belongs to the Fbxs class, and its C-terminal region is highly similar to that of rat NFB42 (neural F Box 42 kDa) which may be involved in the control of the cell cycle. [provided by RefSeq, Jul 2008],

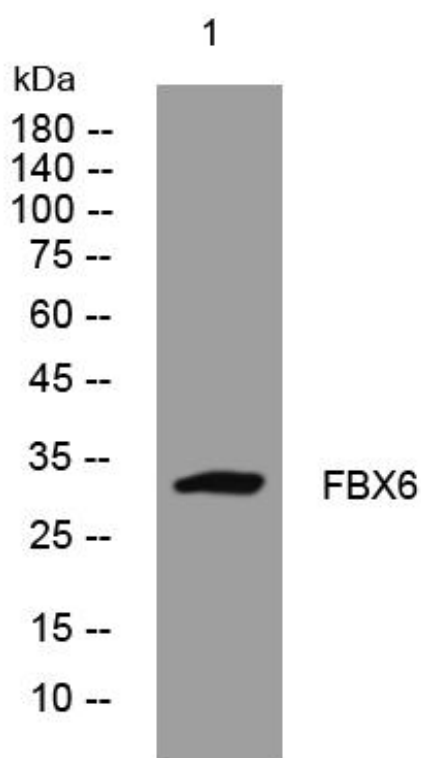
matters needing attention

Avoid repeated freezing and thawing!

Usage suggestions

This product can be used in immunological reaction related experiments. For more information, please consult technical personnel.

Products Images



Western Blot analysis of various cells using FBX6 mouse mAb