



DPPA2 mouse mAb

Catalog No	BYmab-11353
Isotype	IgG
Reactivity	Human; Mouse
Applications	WB
Gene Name	DPPA2 PESCRG1
Protein Name	DPPA2
Immunogen	Synthesized peptide derived from human DPPA2 AA range: 138-188
Specificity	This antibody detects endogenous levels of DPPA2 at Human/Mouse
Formulation	Liquid in PBS containing 50% glycerol, 0.5% BSA and 0.02% sodium azide.
Source	Monoclonal, Mouse,IgG
Purification	The antibody was affinity-purified from mouse antiserum by affinity-chromatography using epitope-specific immunogen.
Dilution	WB 1:500-2000
Concentration	1 mg/ml
Purity	≥90%
Storage Stability	-20°C/1 year
Synonyms	
Observed Band	
Cell Pathway	Nucleus .
Tissue Specificity	Expressed in embryonic stem cells. No expression is seen in 5 months embryo, mesenchymal stem cells, embryonic fibrocytes and adult tissues.
Function	function:May play a role in maintaining cell pluripotentiality.,similarity:Contains 1 SAP domain.,tissue specificity:Expressed in embryonic stem cells. No expression is seen in 5 months embryo, mesenchymal stem cells, embryonic fibrocytes and adult tissues.,
Background	
matters needing attention	Avoid repeated freezing and thawing!

Nanjing BYabscience technology Co.,Ltd

网址: www.njbybio.com

官方热线: 025-5229-8998

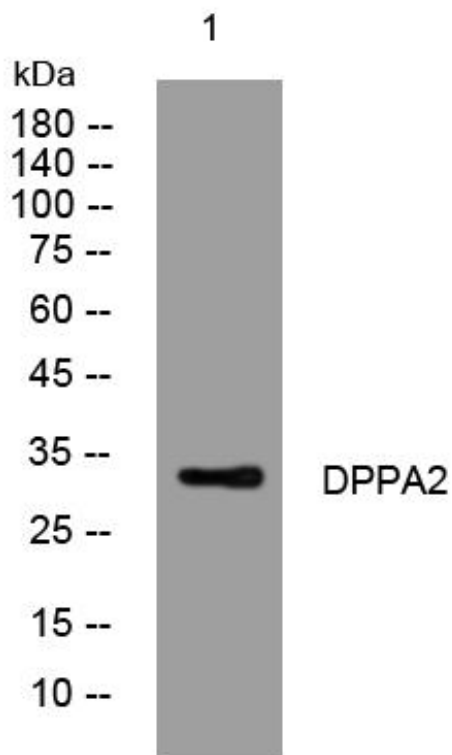
监督电话: 15950492658



Usage suggestions

This product can be used in immunological reaction related experiments. For more information, please consult technical personnel.

Products Images



Western Blot analysis of various cells using DPPA2 mouse mAb

Nanjing BYabscience technology Co.,Ltd

网址: www.njbybio.com

官方热线: 025-5229-8998

监督电话: 15950492658