



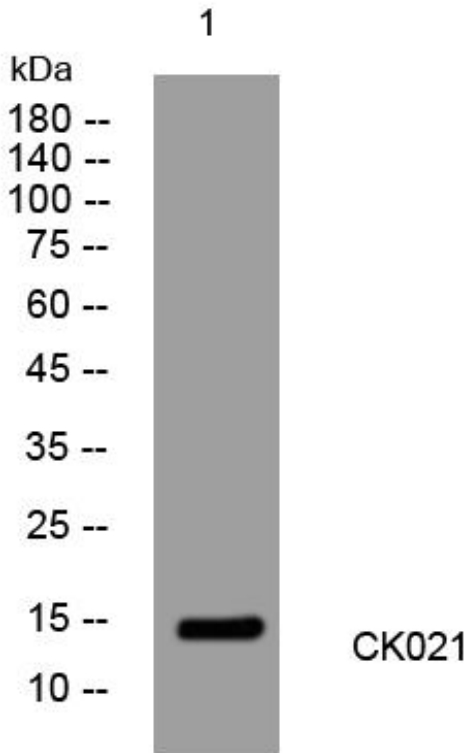
# CK021 mouse mAb

Catalog No	BYmab-11335
Isotype	IgG
Reactivity	Human;Rat;Mouse;
Applications	WB
Gene Name	C11orf21
Protein Name	CK021
Immunogen	Synthesized peptide derived from human CK021 AA range: 16-66
Specificity	This antibody detects endogenous levels of CK021 at Human
Formulation	Liquid in PBS containing 50% glycerol, 0.5% BSA and 0.02% sodium azide.
Source	Monoclonal, Mouse,IgG
Purification	The antibody was affinity-purified from mouse antiserum by affinity-chromatography using epitope-specific immunogen.
Dilution	WB 1:500-2000
Concentration	1 mg/ml
Purity	≥90%
Storage Stability	-20°C/1 year
Synonyms	
Observed Band	
Cell Pathway	Cytoplasm.
Tissue Specificity	Expressed exclusively in heart.
Function	tissue specificity:Expressed exclusively in heart.,
Background	
matters needing attention	Avoid repeated freezing and thawing!
Usage suggestions	This product can be used in immunological reaction related experiments. For more information, please consult technical personnel.

Nanjing BYabscience technology Co.,Ltd



## Products Images



Western Blot analysis of various cells using CK021 mouse mAb