



# BT3A3 mouse mAb

<b>Catalog No</b>	BYmab-11331
<b>Isotype</b>	IgG
<b>Reactivity</b>	Human;Rat;Mouse;
<b>Applications</b>	WB
<b>Gene Name</b>	BTN3A3 BTF3
<b>Protein Name</b>	BT3A3
<b>Immunogen</b>	Synthesized peptide derived from human BT3A3 AA range: 148-198
<b>Specificity</b>	This antibody detects endogenous levels of BT3A3 at Human
<b>Formulation</b>	Liquid in PBS containing 50% glycerol, 0.5% BSA and 0.02% sodium azide.
<b>Source</b>	Monoclonal, Mouse,IgG
<b>Purification</b>	The antibody was affinity-purified from mouse antiserum by affinity-chromatography using epitope-specific immunogen.
<b>Dilution</b>	WB 1:500-2000
<b>Concentration</b>	1 mg/ml
<b>Purity</b>	≥90%
<b>Storage Stability</b>	-20°C/1 year
<b>Synonyms</b>	
<b>Observed Band</b>	
<b>Cell Pathway</b>	Cell membrane ; Single-pass type I membrane protein .
<b>Tissue Specificity</b>	Detected in peripheral blood mononuclear cells and in T-cells (at protein level). Detected in spleen and lymphocytes.
<b>Function</b>	similarity:Belongs to the immunoglobulin superfamily. BTN/MOG family.,similarity:Contains 1 B30.2/SPRY domain.,similarity:Contains 2 Ig-like V-type (immunoglobulin-like) domains.,
<b>Background</b>	The butyrophilin (BTN) genes are a group of major histocompatibility complex (MHC)-associated genes that encode type I membrane proteins with 2 extracellular immunoglobulin (Ig) domains and an intracellular B30.2 (PRYSPRY) domain. Three subfamilies of human BTN genes are located in the MHC class I region: the single-copy BTN1A1 gene (MIM 601610) and the BTN2 (e.g., BTN2A1; MIM 613590) and BTN3 (e.g., BNT3A3) genes, which have undergone tandem duplication, resulting in 3 copies of each (summary by Smith et al., 2010 [PubMed 20208008]).[supplied by OMIM, Nov 2010],

**Nanjing BYabscience technology Co.,Ltd**



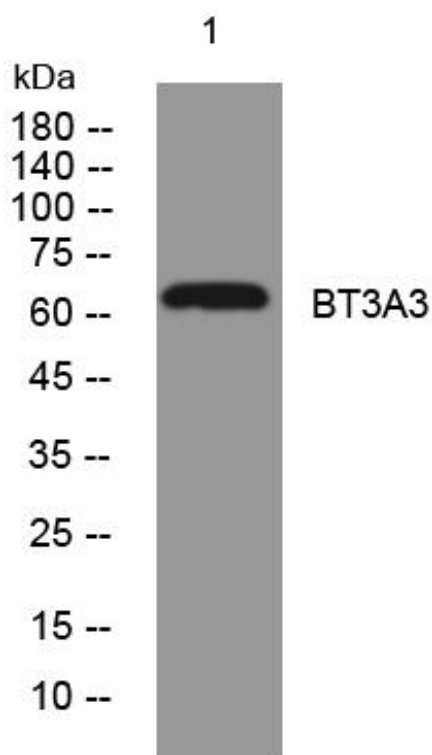
**matters needing attention**

Avoid repeated freezing and thawing!

**Usage suggestions**

This product can be used in immunological reaction related experiments. For more information, please consult technical personnel.

## Products Images



Western Blot analysis of various cells using BT3A3 mouse mAb