



# SPSY mouse mAb

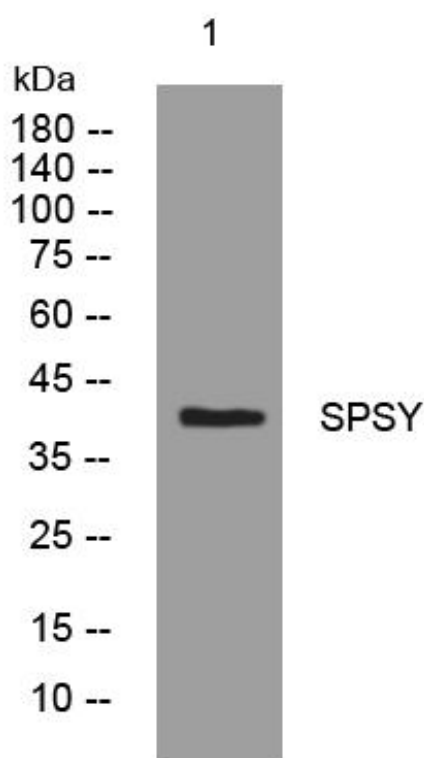
Catalog No	BYmab-11330
Isotype	IgG
Reactivity	Human; Mouse
Applications	WB
Gene Name	SMS
Protein Name	SPSY
Immunogen	Synthesized peptide derived from human SPSY AA range: 81-131
Specificity	This antibody detects endogenous levels of SPSY at Human/Mouse
Formulation	Liquid in PBS containing 50% glycerol, 0.5% BSA and 0.02% sodium azide.
Source	Monoclonal, Mouse,IgG
Purification	The antibody was affinity-purified from mouse antiserum by affinity-chromatography using epitope-specific immunogen.
Dilution	WB 1:500-2000
Concentration	1 mg/ml
Purity	≥90%
Storage Stability	-20°C/1 year
Synonyms	
Observed Band	
Cell Pathway	cytosol,extracellular exosome,
Tissue Specificity	
Function	catalytic activity:S-adenosylmethioninamine + spermidine = 5'-methylthioadenosine + spermine.,disease:Defects in SMS are the cause of Snyder-Robinson syndrome (SRS) [MIM:309583]; also called X-linked mental retardation Snyder-Robinson type. SRS is characterized by moderate intellectual deficit, hypotonia, an unsteady gait, osteoporosis, kyphoscoliosis and facial asymmetry. Transmission is X-linked recessive.,domain:Composed of 3 domains: the N-terminal domain has structural similarity to S-adenosylmethionine decarboxylase, the central domain is made up of four beta strands and the C-terminal domain is similar in structure to spermidine synthase. The N- and C-terminal domains are both required for activity.,function:Required for normal viability, growth and fertility.,pathway:Amine and polyamine biosynthesis; spermine biosynthesis; spermine from spermidine: step 1/1.,similarity:Belongs to

Nanjing BYabscience technology Co.,Ltd



<b>Background</b>	This gene encodes a protein belonging to the spermidine/spermin synthase family. Pseudogenes of this gene are located on chromosomes 1, 5, 6 and X. Mutations in this gene are associated with X-linked Snyder-Robinson mental retardation syndrome. Multiple transcript variants encoding different isoforms have been found for this gene. [provided by RefSeq, May 2012],
<b>matters needing attention</b>	Avoid repeated freezing and thawing!
<b>Usage suggestions</b>	This product can be used in immunological reaction related experiments. For more information, please consult technical personnel.

## Products Images



Western Blot analysis of various cells using SPSY mouse mAb