



TMX2 mouse mAb

Catalog No	BYmab-11325
Isotype	IgG
Reactivity	Human; Mouse;Rat
Applications	WB
Gene Name	TMX2 TXNDC14 CGI-31 My009 PIG26 PSEC0045 UNQ237/PRO270
Protein Name	TMX2
Immunogen	Synthesized peptide derived from human TMX2 AA range: 41-91
Specificity	This antibody detects endogenous levels of TMX2 at Human/Mouse/Rat
Formulation	Liquid in PBS containing 50% glycerol, 0.5% BSA and 0.02% sodium azide.
Source	Monoclonal, Mouse,IgG
Purification	The antibody was affinity-purified from mouse antiserum by affinity-chromatography using epitope-specific immunogen.
Dilution	WB 1:500-2000
Concentration	1 mg/ml
Purity	≥90%
Storage Stability	-20°C/1 year
Synonyms	
Observed Band	
Cell Pathway	Endoplasmic reticulum membrane ; Single-pass type I membrane protein . Mitochondrion membrane . Localizes to endoplasmic reticulum mitochondria-associated membrane (MAMs) that connect the endoplasmic reticulum and the mitochondria. .
Tissue Specificity	Widely expressed.
Function	domain:The di-lysine motif confers endoplasmic reticulum localization for type I membrane proteins.,domain:The thioredoxin domain lacks the 2 redox-active cysteines, suggesting that it lacks thioredoxin activity.,similarity:Contains 1 thioredoxin domain.,tissue specificity:Widely expressed.,
Background	
matters needing attention	Avoid repeated freezing and thawing!

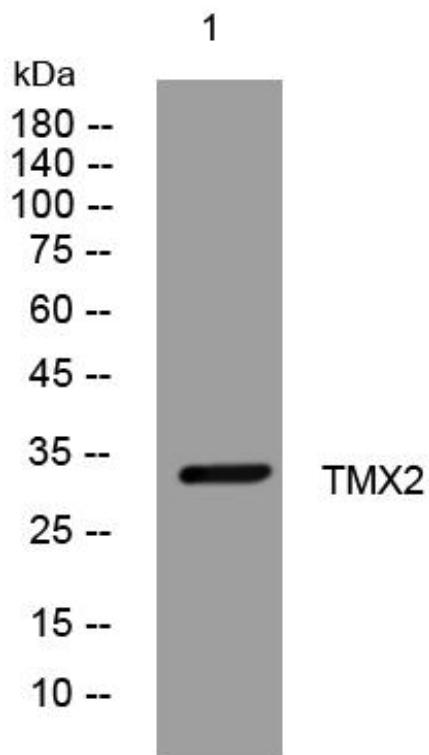
Nanjing BYabscience technology Co.,Ltd



Usage suggestions

This product can be used in immunological reaction related experiments. For more information, please consult technical personnel.

Products Images



Western Blot analysis of various cells using TMX2 mouse mAb

Nanjing BYabscience technology Co.,Ltd

网址: www.njbybio.com

官方热线: 025-5229-8998

监督电话: 15950492658