



XIRP1 mouse mAb

Catalog No	BYmab-11321
Isotype	IgG
Reactivity	Human; Mouse
Applications	WB
Gene Name	XIRP1 CMYA1 XIN
Protein Name	XIRP1
Immunogen	Synthesized peptide derived from human XIRP1 AA range: 1-51
Specificity	This antibody detects endogenous levels of XIRP1 at Human/Mouse
Formulation	Liquid in PBS containing 50% glycerol, 0.5% BSA and 0.02% sodium azide.
Source	Monoclonal, Mouse,IgG
Purification	The antibody was affinity-purified from mouse antiserum by affinity-chromatography using epitope-specific immunogen.
Dilution	WB 1:500-2000
Concentration	1 mg/ml
Purity	≥90%
Storage Stability	-20°C/1 year
Synonyms	
Observed Band	
Cell Pathway	Cell junction . Colocalizes with actin stress fibers.
Tissue Specificity	Isoform A, isoform B and isoform C are expressed in heart.
Function	domain:Xin repeats bind F-actin.,function:Protects actin filaments from depolymerization.,miscellaneous:'Xin' means 'heart' in Chinese.,similarity:Belongs to the Xin family.,similarity:Contains 17 Xin repeats.,subcellular location:Colocalizes with actin stress fibers.,subunit:Interacts with CTNNB1 (By similarity). Interacts with F-actin, FLNC and VASP.,tissue specificity:Isoform A, isoform B and isoform C are expressed in heart.,
Background	
matters needing attention	Avoid repeated freezing and thawing!

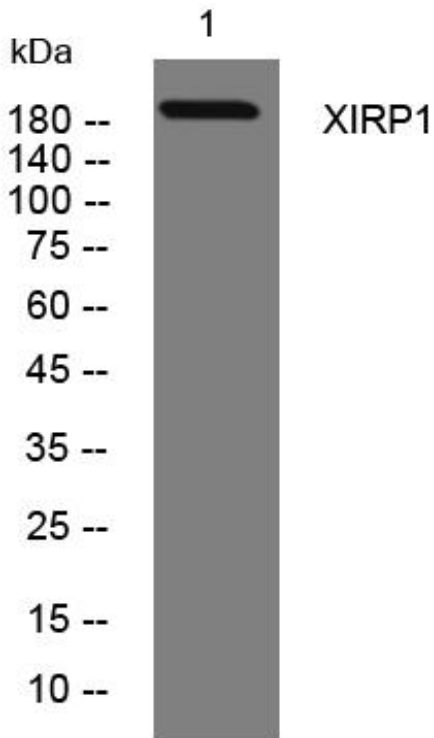
Nanjing BYabscience technology Co.,Ltd



Usage suggestions

This product can be used in immunological reaction related experiments. For more information, please consult technical personnel.

Products Images



Western Blot analysis of various cells using XIRP1 mouse mAb

Nanjing BYabs science technology Co.,Ltd

网址: www.njbybio.com

官方热线: 025-5229-8998

监督电话: 15950492658