



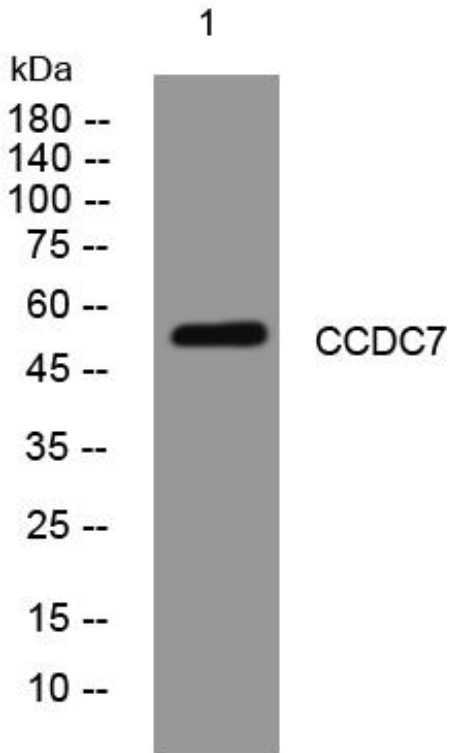
# CCDC7 mouse mAb

Catalog No	BYmab-11315
Isotype	IgG
Reactivity	Human; Mouse
Applications	WB
Gene Name	CCDC7 BIOT2
Protein Name	CCDC7
Immunogen	Synthesized peptide derived from human CCDC7 AA range: 380-430
Specificity	This antibody detects endogenous levels of CCDC7 at Human/Mouse
Formulation	Liquid in PBS containing 50% glycerol, 0.5% BSA and 0.02% sodium azide.
Source	Monoclonal, Mouse,IgG
Purification	The antibody was affinity-purified from mouse antiserum by affinity-chromatography using epitope-specific immunogen.
Dilution	WB 1:500-2000
Concentration	1 mg/ml
Purity	≥90%
Storage Stability	-20°C/1 year
Synonyms	
Observed Band	
Cell Pathway	
Tissue Specificity	Expressed in epithelium of normal cervix and cervical cancer. Overexpressed in early and interim cervical cancer.
Function	
Background	
matters needing attention	Avoid repeated freezing and thawing!
Usage suggestions	This product can be used in immunological reaction related experiments. For more information, please consult technical personnel.

Nanjing BYabscience technology Co.,Ltd



## Products Images



Western Blot analysis of various cells using CCDC7 mouse mAb