



INT3 mouse mAb

Catalog No	BYmab-11303
Isotype	IgG
Reactivity	Human; Mouse
Applications	WB
Gene Name	INTS3 C1orf193 C1orf60
Protein Name	INT3
Immunogen	Synthesized peptide derived from human INT3 AA range: 417-467
Specificity	This antibody detects endogenous levels of INT3 at Human/Mouse
Formulation	Liquid in PBS containing 50% glycerol, 0.5% BSA and 0.02% sodium azide.
Source	Monoclonal, Mouse,IgG
Purification	The antibody was affinity-purified from mouse antiserum by affinity-chromatography using epitope-specific immunogen.
Dilution	WB 1:500-2000
Concentration	1 mg/ml
Purity	≥90%
Storage Stability	-20°C/1 year
Synonyms	
Observed Band	
Cell Pathway	Nucleus . Cytoplasm . Localizes to nuclear foci following DNA damage.
Tissue Specificity	
Function	function:Component of the Integrator complex, a complex involved in the small nuclear RNAs (snRNA) U1 and U2 transcription and in their 3'-box-dependent processing. The Integrator complex is associated with the C-terminal domain (CTD) of RNA polymerase II largest subunit (POLR2A) and is recruited to the U1 and U2 snRNAs genes.,sequence caution:Intron retention.,similarity:Belongs to the Integrator subunit 3 family.,subunit:Belongs to the multiprotein complex Integrator, at least composed of INTS1, INTS2, INTS3, INTS4, INTS5, INTS6, INTS7, INTS8, INTS9/RC74, INTS10, CPSF3L/INTS11 and INTS12.,
Background	The protein encoded by this gene can form a complex with human single-strand DNA binding proteins 1 or 2 (hSSB1 and hSSB2) and other proteins to mediate genome stability and the DNA damage response. The encoded protein is also part

Nanjing BYabscience technology Co.,Ltd



of a multiprotein complex that interacts with the C-terminal domain of RNA polymerase II large subunit to help regulate processing of U1 and U2 small nuclear RNAs. [provided by RefSeq, May 2016],

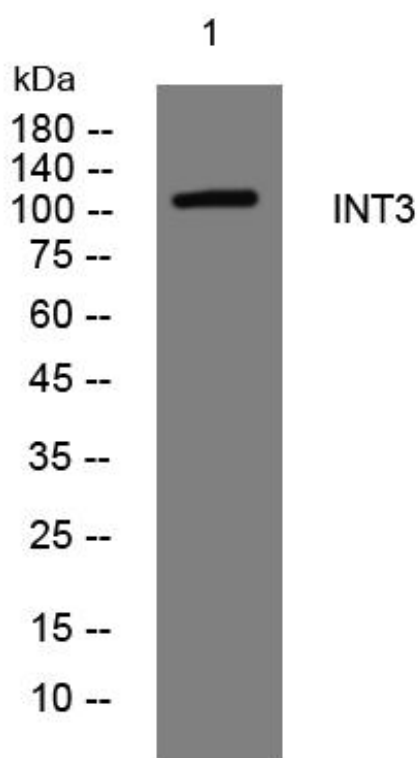
matters needing attention

Avoid repeated freezing and thawing!

Usage suggestions

This product can be used in immunological reaction related experiments. For more information, please consult technical personnel.

Products Images



Western Blot analysis of various cells using INT3 mouse mAb