



CRYL1 mouse mAb

Catalog No	BYmab-11300
Isotype	IgG
Reactivity	Human; Mouse;Rat
Applications	WB
Gene Name	CRYL1 CRY
Protein Name	CRYL1
Immunogen	Synthesized peptide derived from human CRYL1 AA range: 50-100
Specificity	This antibody detects endogenous levels of CRYL1 at Human/Mouse/Rat
Formulation	Liquid in PBS containing 50% glycerol, 0.5% BSA and 0.02% sodium azide.
Source	Monoclonal, Mouse,IgG
Purification	The antibody was affinity-purified from mouse antiserum by affinity-chromatography using epitope-specific immunogen.
Dilution	WB 1:500-2000
Concentration	1 mg/ml
Purity	≥90%
Storage Stability	-20°C/1 year
Synonyms	
Observed Band	
Cell Pathway	Cytoplasm .
Tissue Specificity	Widely expressed, with highest levels in liver and kidney.
Function	sequence caution:Unknown reasons.,similarity:Belongs to the 3-hydroxyacyl-CoA dehydrogenase family.,tissue specificity:Widely expressed, with highest levels in liver and kidney.,
Background	The uronate cycle functions as an alternative glucose metabolic pathway, accounting for about 5% of daily glucose catabolism. The product of this gene catalyzes the dehydrogenation of L-gulonate into dehydro-L-gulonate in the uronate cycle. The enzyme requires NAD(H) as a coenzyme, and is inhibited by inorganic phosphate. A similar gene in the Mouse is thought to serve a structural role in the lens of the eye. [provided by RefSeq, Jul 2008],

Nanjing BYabscience technology Co.,Ltd

网址: www.njbybio.com

官方热线: 025-5229-8998

监督电话: 15950492658



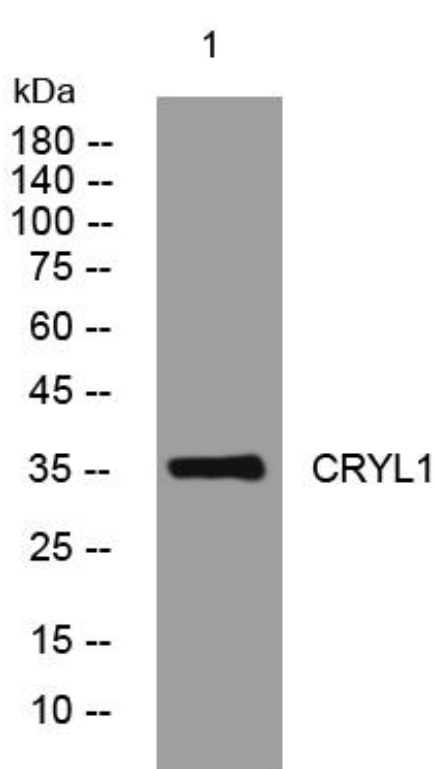
matters needing attention

Avoid repeated freezing and thawing!

Usage suggestions

This product can be used in immunological reaction related experiments. For more information, please consult technical personnel.

Products Images



Western Blot analysis of various cells using CRYL1 mouse mAb