



# DAZL mouse mAb

<b>Catalog No</b>	BYmab-11298
<b>Isotype</b>	IgG
<b>Reactivity</b>	Human; Mouse
<b>Applications</b>	WB
<b>Gene Name</b>	DAZL DAZH DAZL1 DAZLA SPGYLA
<b>Protein Name</b>	DAZL
<b>Immunogen</b>	Synthesized peptide derived from human DAZL AA range: 202-252
<b>Specificity</b>	This antibody detects endogenous levels of DAZL at Human/Mouse
<b>Formulation</b>	Liquid in PBS containing 50% glycerol, 0.5% BSA and 0.02% sodium azide.
<b>Source</b>	Monoclonal, Mouse,IgG
<b>Purification</b>	The antibody was affinity-purified from mouse antiserum by affinity-chromatography using epitope-specific immunogen.
<b>Dilution</b>	WB 1:500-2000
<b>Concentration</b>	1 mg/ml
<b>Purity</b>	≥90%
<b>Storage Stability</b>	-20°C/1 year
<b>Synonyms</b>	
<b>Observed Band</b>	
<b>Cell Pathway</b>	Cytoplasm . Nucleus . Predominantly cytoplasmic. Nuclear in spermatogonia until near the end of the meiotic prophase and cytoplasmic localization from then onward. .
<b>Tissue Specificity</b>	Testis specific.
<b>Function</b>	disease:Defects in DAZL may be a cause of infertility due to severe oligozoospermia (AZ) and non obstructive azoospermia.,domain:The DAZ-like domain mediates the interaction with DAZAP1 and DAZAP2.,function:RNA-binding protein, which is essential for gametogenesis. Plays a central role during spermatogenesis. May act by binding to the 3'-UTR of mRNA and thereby regulating the translation of key transcripts.,similarity:Belongs to the RRM DAZ family.,similarity:Contains 1 DAZ-like domain.,similarity:Contains 1 RRM (RNA recognition motif) domain.,subcellular location:Predominantly cytoplasmic (By similarity). Nuclear in spermatogonia until near the end of the meiotic prophase and cytoplasmic localization from then onward.,subunit:Homodimer and heterodimer (By similarity). Forms a heterodimer

**Nanjing BYabscience technology Co.,Ltd**



with DAZ. Interacts with BOLL, DAZAP1 and DAZAP2. Interacts with PUM2.,tissue specificity:Testis spe

## Background

The DAZ (Deleted in AZoospermia) gene family encodes potential RNA binding proteins that are expressed in prenatal and postnatal germ cells of males and females. The protein encoded by this gene is localized to the nucleus and cytoplasm of fetal germ cells and to the cytoplasm of developing oocytes. In the testis, this protein is localized to the nucleus of spermatogonia but relocates to the cytoplasm during meiosis where it persists in spermatids and spermatozoa. Transposition and amplification of this autosomal gene during primate evolution gave rise to the DAZ gene cluster on the Y chromosome. Mutations in this gene have been linked to severe spermatogenic failure and infertility in males. Two transcript variants encoding different isoforms have been found for this gene. [provided by RefSeq, Jun 2010],

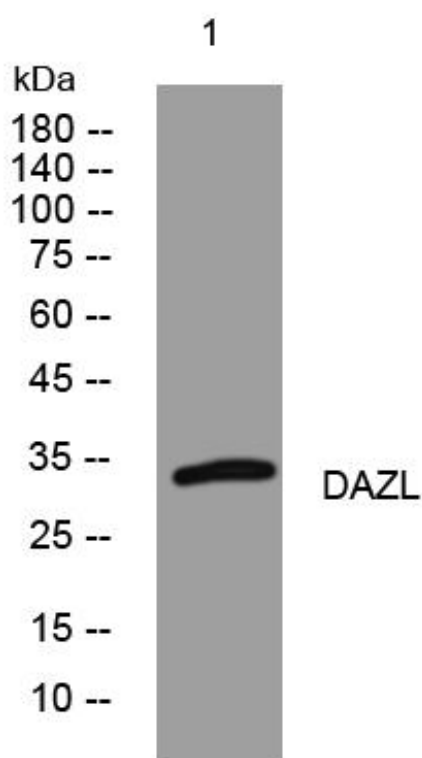
## matters needing attention

Avoid repeated freezing and thawing!

## Usage suggestions

This product can be used in immunological reaction related experiments. For more information, please consult technical personnel.

## Products Images



Western Blot analysis of various cells using DAZL mouse mAb

Nanjing BYabs science technology Co.,Ltd

网址: [www.njbybio.com](http://www.njbybio.com)

官方热线: 025-5229-8998

监督电话: 15950492658