



# LHPP mouse mAb

Catalog No	BYmab-11293
Isotype	IgG
Reactivity	Human; Mouse;Rat
Applications	WB
Gene Name	LHPP
Protein Name	LHPP
Immunogen	Synthesized peptide derived from human LHPP AA range: 140-190
Specificity	This antibody detects endogenous levels of LHPP at Human/Mouse/Rat
Formulation	Liquid in PBS containing 50% glycerol, 0.5% BSA and 0.02% sodium azide.
Source	Monoclonal, Mouse,IgG
Purification	The antibody was affinity-purified from mouse antiserum by affinity-chromatography using epitope-specific immunogen.
Dilution	WB 1:500-2000
Concentration	1 mg/ml
Purity	≥90%
Storage Stability	-20°C/1 year
Synonyms	
Observed Band	
Cell Pathway	Cytoplasm . Nucleus .
Tissue Specificity	Expressed in brain, and at lower levels in liver and kidney. Detected in thyroid (at protein level). Expressed in liver, kidney and moderately in brain.
Function	catalytic activity:Diphosphate + H(2)O = 2 phosphate.,similarity:Belongs to the HAD-like hydrolase superfamily.,subunit:Homodimer.,tissue specificity:Expressed in liver, kidney and moderately in brain.,
Background	
matters needing attention	Avoid repeated freezing and thawing!

Nanjing BYabscience technology Co.,Ltd

网址: [www.njbybio.com](http://www.njbybio.com)

官方热线: 025-5229-8998

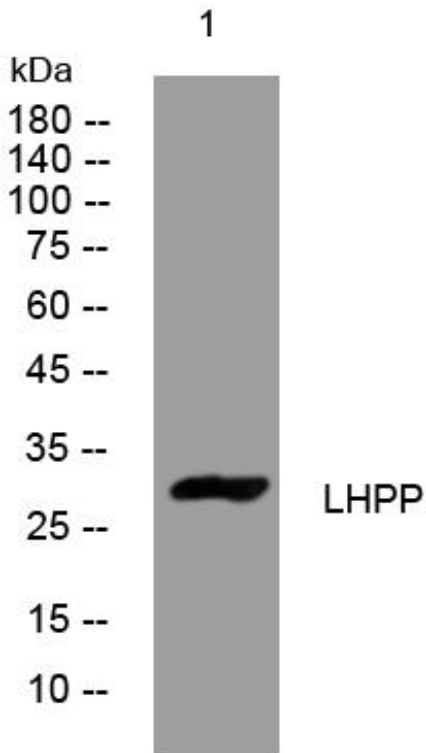
监督电话: 15950492658



### Usage suggestions

This product can be used in immunological reaction related experiments. For more information, please consult technical personnel.

## Products Images



Western Blot analysis of various cells using LHPP mouse mAb

Nanjing BYabs science technology Co.,Ltd

网址: [www.njbybio.com](http://www.njbybio.com)

官方热线: 025-5229-8998

监督电话: 15950492658