



TBCD mouse mAb

Catalog No	BYmab-11290
Isotype	IgG
Reactivity	Human; Mouse
Applications	WB
Gene Name	TBCD KIAA0988 SSD1 TFCD PP1096
Protein Name	TBCD
Immunogen	Synthesized peptide derived from human TBCD AA range: 419-469
Specificity	This antibody detects endogenous levels of TBCD at Human/Mouse
Formulation	Liquid in PBS containing 50% glycerol, 0.5% BSA and 0.02% sodium azide.
Source	Monoclonal, Mouse,IgG
Purification	The antibody was affinity-purified from mouse antiserum by affinity-chromatography using epitope-specific immunogen.
Dilution	WB 1:500-2000
Concentration	1 mg/ml
Purity	≥90%
Storage Stability	-20°C/1 year
Synonyms	
Observed Band	
Cell Pathway	Cell junction, tight junction . Lateral cell membrane . Cytoplasm . Cell junction, adherens junction . Cytoplasm, cytoskeleton, microtubule organizing center, centrosome . Localized in cell-cell contacts. .
Tissue Specificity	Ubiquitously expressed.
Function	function:Tubulin-folding protein; involved in the first step of the tubulin folding pathway. Modulates microtubule dynamics by capturing GTP-bound beta-tubulin (TUBB).,induction:Down-regulated by shear stress.,similarity:Belongs to the TBCD family.,similarity:Contains 3 HEAT repeats.,subunit:Supercomplex made of cofactors A to E. Cofactors A and D function by capturing and stabilizing tubulin in a quasi-native conformation. Cofactor E binds to the cofactor D-tubulin complex; interaction with cofactor C then causes the release of tubulin polypeptides that are committed to the native state.,tissue specificity:Ubiquitously expressed.,
Background	Cofactor D is one of four proteins (cofactors A, D, E, and C) involved in the pathway leading to correctly folded beta-tubulin from folding intermediates.

Nanjing BYabscience technology Co.,Ltd



Cofactors A and D are believed to play a role in capturing and stabilizing beta-tubulin intermediates in a quasi-native confirmation. Cofactor E binds to the cofactor D/beta-tubulin complex; interaction with cofactor C then causes the release of beta-tubulin polypeptides that are committed to the native state. [provided by RefSeq, Jul 2008],

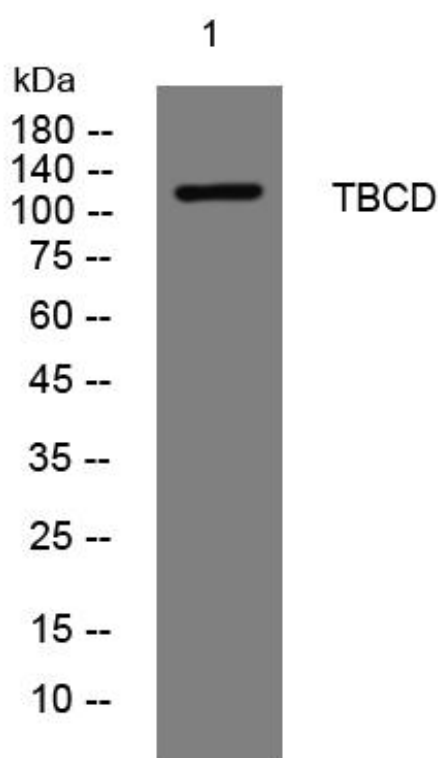
matters needing attention

Avoid repeated freezing and thawing!

Usage suggestions

This product can be used in immunological reaction related experiments. For more information, please consult technical personnel.

Products Images



Western Blot analysis of various cells using TBCD mouse mAb