



# ZN561 mouse mAb

|                           |  |
|---------------------------|--|
| Catalog No                | BYmab-11287  |
| Isotype                   | IgG  |
| Reactivity                | Human;Rat;Mouse;   |
| Applications              | WB   |
| Gene Name                 | ZNF561   |
| Protein Name              | ZN561  |
| Immunogen                 | Synthesized peptide derived from human ZN561 AA range: 387-437   |
| Specificity               | This antibody detects endogenous levels of ZN561 at Human  |
| Formulation               | Liquid in PBS containing 50% glycerol, 0.5% BSA and 0.02% sodium azide.  |
| Source                    | Monoclonal, Mouse,IgG  |
| Purification              | The antibody was affinity-purified from mouse antiserum by affinity-chromatography using epitope-specific immunogen.   |
| Dilution                  | WB 1:500-2000  |
| Concentration             | 1 mg/ml  |
| Purity                    | ≥90%   |
| Storage Stability         | -20°C/1 year   |
| Synonyms                  |  |
| Observed Band             |  |
| Cell Pathway              | Nucleus .  |
| Tissue Specificity        |  |
| Function                  | caution:Could be the product of a pseudogene.,function:May be involved in transcriptional regulation.,sequence caution:Contaminating sequence. Potential poly-A sequence.,similarity:Belongs to the krueppel C2H2-type zinc-finger protein family.,similarity:Contains 1 KRAB domain.,similarity:Contains 10 C2H2-type zinc fingers.,similarity:Contains 12 C2H2-type zinc fingers., |
| Background                |  |
| matters needing attention | Avoid repeated freezing and thawing!   |

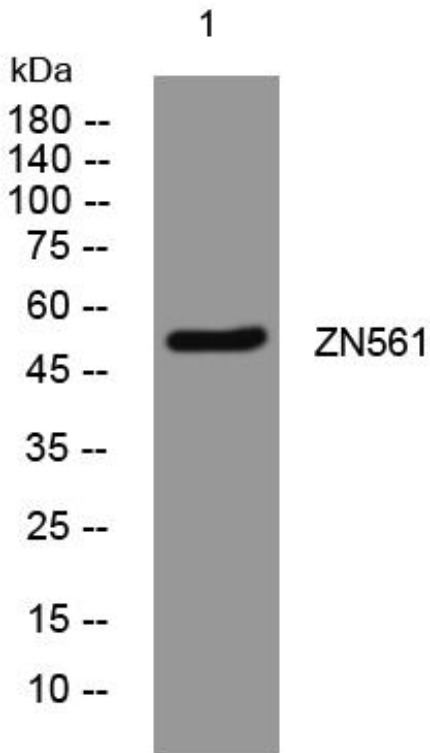
Nanjing BYabscience technology Co.,Ltd



### Usage suggestions

This product can be used in immunological reaction related experiments. For more information, please consult technical personnel.

## Products Images



Western Blot analysis of various cells using ZN561 mouse mAb

Nanjing BYabscience technology Co.,Ltd

网址: [www.njbybio.com](http://www.njbybio.com)

官方热线: 025-5229-8998

监督电话: 15950492658