



CK080 mouse mAb

Catalog No	BYmab-11285
Isotype	IgG
Reactivity	Human;Rat;Mouse;
Applications	WB
Gene Name	C11orf80
Protein Name	CK080
Immunogen	Synthesized peptide derived from human CK080 AA range: 93-143
Specificity	This antibody detects endogenous levels of CK080 at Human
Formulation	Liquid in PBS containing 50% glycerol, 0.5% BSA and 0.02% sodium azide.
Source	Monoclonal, Mouse,IgG
Purification	The antibody was affinity-purified from mouse antiserum by affinity-chromatography using epitope-specific immunogen.
Dilution	WB 1:500-2000
Concentration	1 mg/ml
Purity	≥90%
Storage Stability	-20°C/1 year
Synonyms	
Observed Band	
Cell Pathway	Chromosome . Localizes to meiotic chromosomes. .
Tissue Specificity	Detected in lung, spleen,colon and in skeletal muscle. Expressed in the ovaries, Fallopian tubes and uterus (PubMed:30388401).
Function	
Background	
matters needing attention	Avoid repeated freezing and thawing!
Usage suggestions	This product can be used in immunological reaction related experiments. For more information, please consult technical personnel.

Nanjing BYabscience technology Co.,Ltd

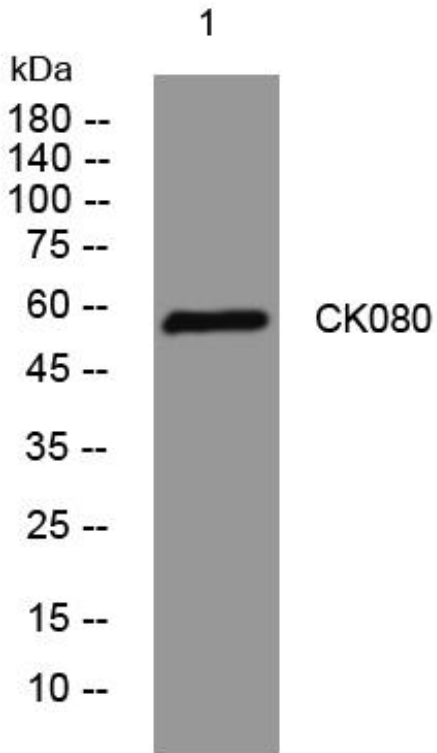
网址: www.njbybio.com

官方热线: 025-5229-8998

监督电话: 15950492658



Products Images



Western Blot analysis of various cells using CK080 mouse mAb