



CETN1 mouse mAb

Catalog No	BYmab-11279
Isotype	IgG
Reactivity	Human; Mouse
Applications	WB
Gene Name	CETN1 CEN1 CETN
Protein Name	CETN1
Immunogen	Synthesized peptide derived from human CETN1 AA range: 96-146
Specificity	This antibody detects endogenous levels of CETN1 at Human/Mouse
Formulation	Liquid in PBS containing 50% glycerol, 0.5% BSA and 0.02% sodium azide.
Source	Monoclonal, Mouse,IgG
Purification	The antibody was affinity-purified from mouse antiserum by affinity-chromatography using epitope-specific immunogen.
Dilution	WB 1:500-2000
Concentration	1 mg/ml
Purity	≥90%
Storage Stability	-20°C/1 year
Synonyms	
Observed Band	
Cell Pathway	Cytoplasm, cytoskeleton, microtubule organizing center, centrosome . Cell projection, cilium . Centrosome of interphase and mitotic cells. In the retinal photoreceptor cells, localizes at the connecting cilium, a thin bridge linking the cell body and the light-sensing outer segment (By similarity). .
Tissue Specificity	
Function	function:Plays a fundamental role in microtubule-organizing center structure and function.,miscellaneous:Binds two moles of calcium per mole of protein.,similarity:Belongs to the centrin family.,similarity:Contains 4 EF-hand domains.,subcellular location:Centrosome of interphase and mitotic cells.,subunit:Monomer.,
Background	The protein encoded by this gene plays important roles in the determination of centrosome position and segregation, and in the process of microtubule severing. This protein is localized to the centrosome of interphase cells, and redistributes to the region of the spindle poles during mitosis, reflecting the dynamic behavior of

Nanjing BYabscience technology Co.,Ltd



the centrosome during the cell cycle. [provided by RefSeq, Jan 2015],

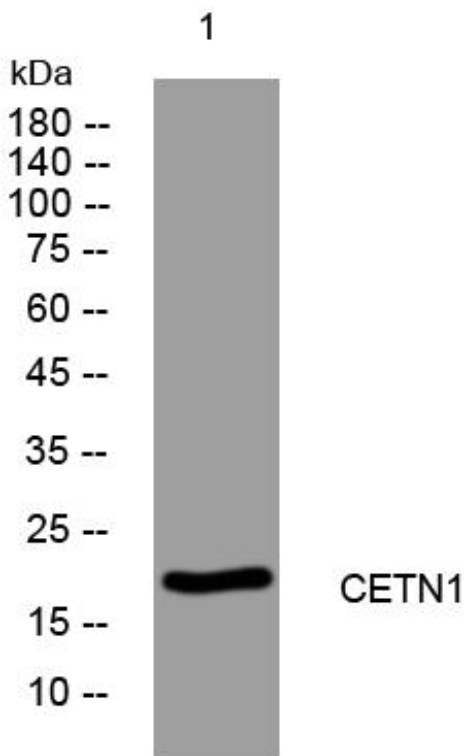
matters needing attention

Avoid repeated freezing and thawing!

Usage suggestions

This product can be used in immunological reaction related experiments. For more information, please consult technical personnel.

Products Images



Western Blot analysis of various cells using CETN1 mouse mAb