



KLHL2 mouse mAb

Catalog No	BYmab-11274
Isotype	IgG
Reactivity	Human; Mouse
Applications	WB
Gene Name	KLHL2
Protein Name	KLHL2
Immunogen	Synthesized peptide derived from human KLHL2 AA range: 521-571
Specificity	This antibody detects endogenous levels of KLHL2 at Human/Mouse
Formulation	Liquid in PBS containing 50% glycerol, 0.5% BSA and 0.02% sodium azide.
Source	Monoclonal, Mouse,IgG
Purification	The antibody was affinity-purified from mouse antiserum by affinity-chromatography using epitope-specific immunogen.
Dilution	WB 1:500-2000
Concentration	1 mg/ml
Purity	≥90%
Storage Stability	-20°C/1 year
Synonyms	
Observed Band	
Cell Pathway	Cytoplasm, cytoskeleton. Cell projection, ruffle. Cell projection . Cell projection, lamellipodium . Cytoplasm, cytosol. A proportion colocalizes with the actin cytoskeleton. When over-expressed, colocalizes with NPTXR in perinuclear aggresomes (By similarity). .
Tissue Specificity	Ubiquitous. Detected throughout the brain.
Function	function:May play a role in organizing the actin cytoskeleton of the brain cells.,similarity:Contains 1 BTB (POZ) domain.,similarity:Contains 6 Kelch repeats.,subunit:Binds actin.,tissue specificity:Predominantly expressed in brain.,
Background	
matters needing attention	Avoid repeated freezing and thawing!

Nanjing BYabscience technology Co.,Ltd

网址: www.njbybio.com

官方热线: 025-5229-8998

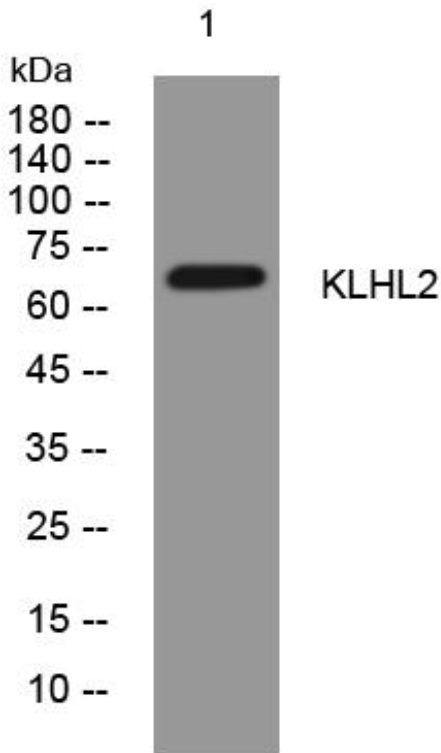
监督电话: 15950492658



Usage suggestions

This product can be used in immunological reaction related experiments. For more information, please consult technical personnel.

Products Images



Western Blot analysis of various cells using KLHL2 mouse mAb

Nanjing BYabs science technology Co.,Ltd

网址: www.njbybio.com

官方热线: 025-5229-8998

监督电话: 15950492658