



# TMCC3 mouse mAb

Catalog No	BYmab-11264
Isotype	IgG
Reactivity	Human; Mouse
Applications	WB
Gene Name	TMCC3 KIAA1145
Protein Name	TMCC3
Immunogen	Synthesized peptide derived from human TMCC3 AA range: 33-83
Specificity	This antibody detects endogenous levels of TMCC3 at Human/Mouse
Formulation	Liquid in PBS containing 50% glycerol, 0.5% BSA and 0.02% sodium azide.
Source	Monoclonal, Mouse,IgG
Purification	The antibody was affinity-purified from mouse antiserum by affinity-chromatography using epitope-specific immunogen.
Dilution	WB 1:500-2000
Concentration	1 mg/ml
Purity	≥90%
Storage Stability	-20°C/1 year
Synonyms	
Observed Band	
Cell Pathway	Endoplasmic reticulum membrane ; Multi-pass membrane protein . Concentrates in discrete patches along peripheral endoplasmic reticulum tubules. .
Tissue Specificity	Widely expressed, with highest levels in brain, spinal cord and testis.
Function	similarity:Belongs to the TEX28 family.,
Background	
matters needing attention	Avoid repeated freezing and thawing!
Usage suggestions	This product can be used in immunological reaction related experiments. For more information, please consult technical personnel.

Nanjing BYabscience technology Co.,Ltd

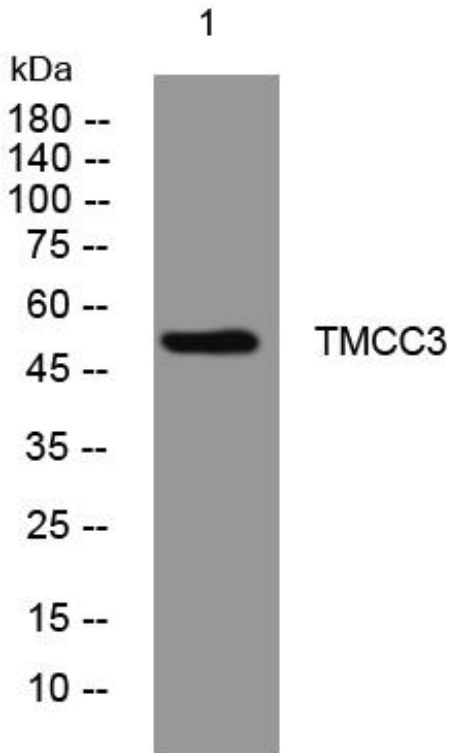
网址: [www.njbybio.com](http://www.njbybio.com)

官方热线: 025-5229-8998

监督电话: 15950492658



## Products Images



Western Blot analysis of various cells using TMCC3 mouse mAb