



# LKHA4 mouse mAb

<b>Catalog No</b>	BYmab-11259
<b>Isotype</b>	IgG
<b>Reactivity</b>	Human; Mouse;Rat
<b>Applications</b>	WB
<b>Gene Name</b>	LTA4H LTA4
<b>Protein Name</b>	LKHA4
<b>Immunogen</b>	Synthesized peptide derived from human LKHA4 AA range: 68-118
<b>Specificity</b>	This antibody detects endogenous levels of LKHA4 at Human/Mouse/Rat
<b>Formulation</b>	Liquid in PBS containing 50% glycerol, 0.5% BSA and 0.02% sodium azide.
<b>Source</b>	Monoclonal, Mouse,IgG
<b>Purification</b>	The antibody was affinity-purified from mouse antiserum by affinity-chromatography using epitope-specific immunogen.
<b>Dilution</b>	WB 1:500-2000
<b>Concentration</b>	1 mg/ml
<b>Purity</b>	≥90%
<b>Storage Stability</b>	-20°C/1 year
<b>Synonyms</b>	
<b>Observed Band</b>	67kD
<b>Cell Pathway</b>	Cytoplasm .
<b>Tissue Specificity</b>	Isoform 1 and isoform 2 are expressed in monocytes, lymphocytes, neutrophils, reticulocytes, platelets and fibroblasts.
<b>Function</b>	catalytic activity:(7E,9E,11Z,14Z)-(5S,6S)-5,6-epoxyicosa-7,9,11,14-tetraenoate + H(2)O = (6Z,8E,10E,14Z)-(5S,12R)-5,12-dihydroxyicosa-6,8,10,14-tetraenoate.,cofactor:B inds 1 zinc ion per subunit.,function:Hydrolyzes an epoxide moiety of leukotriene A4 (LTA-4) to form leukotriene B4 (LTB-4). The enzyme also has some peptidase activity.,pathway:Lipid metabolism; leukotriene B4 biosynthesis.,similarity:Belongs to the peptidase M1 family.,subunit:Monomer.,
<b>Background</b>	The protein encoded by this gene is an enzyme that contains both hydrolase and aminopeptidase activities. The hydrolase activity is used in the final step of the biosynthesis of leukotriene B4, a proinflammatory mediator. The aminopeptidase activity has been shown to degrade proline-glycine-proline (PGP), a neutrophil

**Nanjing BYabscience technology Co.,Ltd**



chemoattractant and biomarker for chronic obstructive pulmonary disease (COPD). Several transcript variants encoding different isoforms have been found for this gene. [provided by RefSeq, Sep 2015],

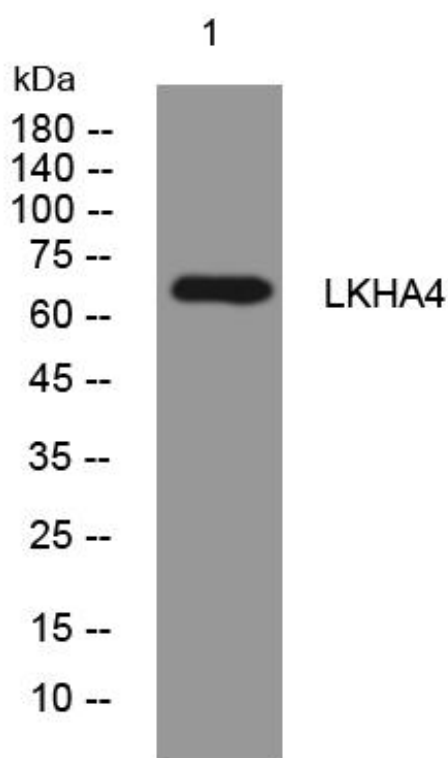
**matters needing attention**

Avoid repeated freezing and thawing!

**Usage suggestions**

This product can be used in immunological reaction related experiments. For more information, please consult technical personnel.

## Products Images



Western Blot analysis of various cells using LKHA4 mouse mAb

Nanjing BYabs science technology Co.,Ltd

网址: [www.njbybio.com](http://www.njbybio.com)

官方热线: 025-5229-8998

监督电话: 15950492658