



# PKHA3 mouse mAb

Catalog No	BYmab-11241
Isotype	IgG
Reactivity	Human; Mouse
Applications	WB
Gene Name	PLEKHA3 FAPP1
Protein Name	PKHA3
Immunogen	Synthesized peptide derived from human PKHA3 AA range: 189-239
Specificity	This antibody detects endogenous levels of PKHA3 at Human/Mouse
Formulation	Liquid in PBS containing 50% glycerol, 0.5% BSA and 0.02% sodium azide.
Source	Monoclonal, Mouse,IgG
Purification	The antibody was affinity-purified from mouse antiserum by affinity-chromatography using epitope-specific immunogen.
Dilution	WB 1:500-2000
Concentration	1 mg/ml
Purity	≥90%
Storage Stability	-20°C/1 year
Synonyms	
Observed Band	
Cell Pathway	Golgi apparatus, trans-Golgi network membrane ; Peripheral membrane protein . Localizes to ER-trans Golgi network (TGN) contacts sites. .
Tissue Specificity	Widely expressed.
Function	function: Binds specifically to phosphatidylinositol-4-phosphate (PtdIns4P), but not to other phosphoinositides.; similarity: Contains 1 PH domain.; tissue specificity: Widely expressed.,
Background	
matters needing attention	Avoid repeated freezing and thawing!

Nanjing BYabscience technology Co.,Ltd

网址: [www.njbybio.com](http://www.njbybio.com)

官方热线: 025-5229-8998

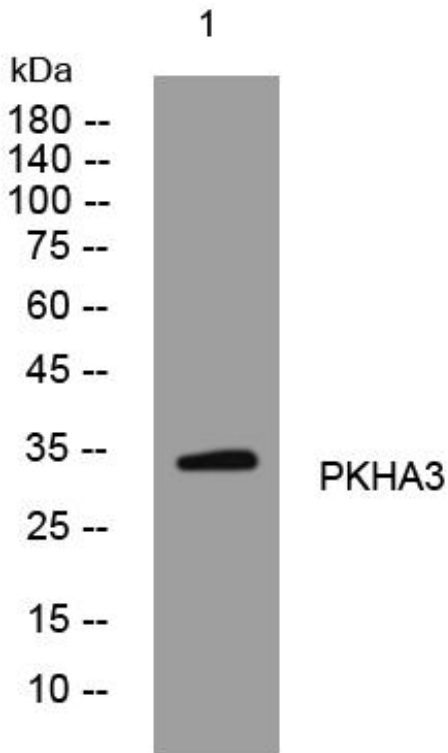
监督电话: 15950492658



### Usage suggestions

This product can be used in immunological reaction related experiments. For more information, please consult technical personnel.

## Products Images



Western Blot analysis of various cells using PKHA3 mouse mAb

Nanjing BYabscience technology Co.,Ltd

网址: [www.njbybio.com](http://www.njbybio.com)

官方热线: 025-5229-8998

监督电话: 15950492658