



JERKL mouse mAb

Catalog No	BYmab-11231
Isotype	IgG
Reactivity	Human; Mouse
Applications	WB
Gene Name	JRKL
Protein Name	JERKL
Immunogen	Synthesized peptide derived from human JERKL AA range: 254-304
Specificity	This antibody detects endogenous levels of JERKL at Human/Mouse
Formulation	Liquid in PBS containing 50% glycerol, 0.5% BSA and 0.02% sodium azide.
Source	Monoclonal, Mouse,IgG
Purification	The antibody was affinity-purified from mouse antiserum by affinity-chromatography using epitope-specific immunogen.
Dilution	WB 1:500-2000
Concentration	1 mg/ml
Purity	≥90%
Storage Stability	-20°C/1 year
Synonyms	
Observed Band	
Cell Pathway	Nucleus .
Tissue Specificity	Abundantly expressed in the majority of tissues examined, including brain and skeletal muscle.
Function	similarity:Belongs to the tigger transposable element derived protein family.,similarity:Contains 1 DDE domain.,similarity:Contains 1 HTH CENPB-type DNA-binding domain.,tissue specificity:Abundantly expressed in the majority of tissues examined, including brain and skeletal muscle.,
Background	The function of this gene has not yet been defined, however, the encoded protein shares similarity with the human (41% identical) and mouse (34% identical) jerky gene products. This protein may act as a nuclear regulatory protein. Alternatively spliced transcript variants have been found for this gene. [provided by RefSeq, May 2012],

Nanjing BYabscience technology Co.,Ltd

网址: www.njbybio.com

官方热线: 025-5229-8998

监督电话: 15950492658



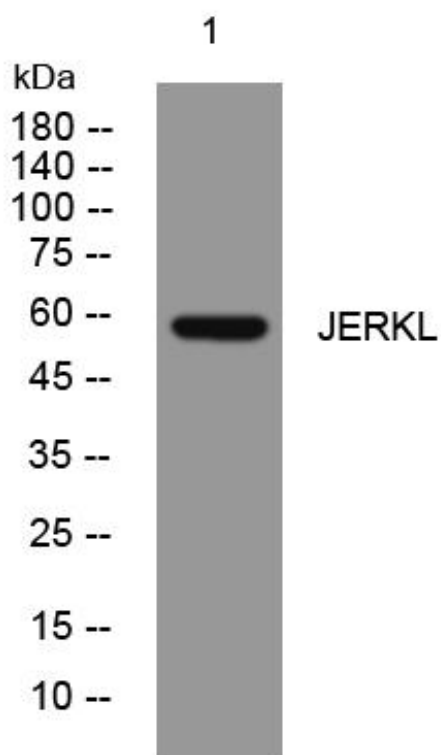
matters needing attention

Avoid repeated freezing and thawing!

Usage suggestions

This product can be used in immunological reaction related experiments. For more information, please consult technical personnel.

Products Images



Western Blot analysis of various cells using JERKL mouse mAb