



KI18A mouse mAb

| | |
|----------------------------------|--|
| Catalog No | BYmab-11228 |
| Isotype | IgG |
| Reactivity | Human; Mouse |
| Applications | WB |
| Gene Name | KIF18A OK/SW-cl.108 |
| Protein Name | KI18A |
| Immunogen | Synthesized peptide derived from human KI18A AA range: 713-763 |
| Specificity | This antibody detects endogenous levels of KI18A at Human/Mouse |
| Formulation | Liquid in PBS containing 50% glycerol, 0.5% BSA and 0.02% sodium azide. |
| Source | Monoclonal, Mouse,IgG |
| Purification | The antibody was affinity-purified from mouse antiserum by affinity-chromatography using epitope-specific immunogen. |
| Dilution | WB 1:500-2000 |
| Concentration | 1 mg/ml |
| Purity | ≥90% |
| Storage Stability | -20°C/1 year |
| Synonyms | |
| Observed Band | |
| Cell Pathway | Cell projection, ruffle. Cytoplasm. Nucleus. Cytoplasm, cytoskeleton, microtubule organizing center, centrosome. |
| Tissue Specificity | |
| Function | similarity:Belongs to the kinesin-like protein family.,similarity:Contains 1 kinesin-motor domain., |
| Background | KIF18A is a member of the kinesin superfamily of microtubule-associated molecular motors (see MIM 148760) that use hydrolysis of ATP to produce force and movement along microtubules (Luboshits and Benayahu, 2005 [PubMed 15878648]).[supplied by OMIM, Aug 2008], |
| matters needing attention | Avoid repeated freezing and thawing! |

Nanjing BYabscience technology Co.,Ltd

网址: www.njbybio.com

官方热线: 025-5229-8998

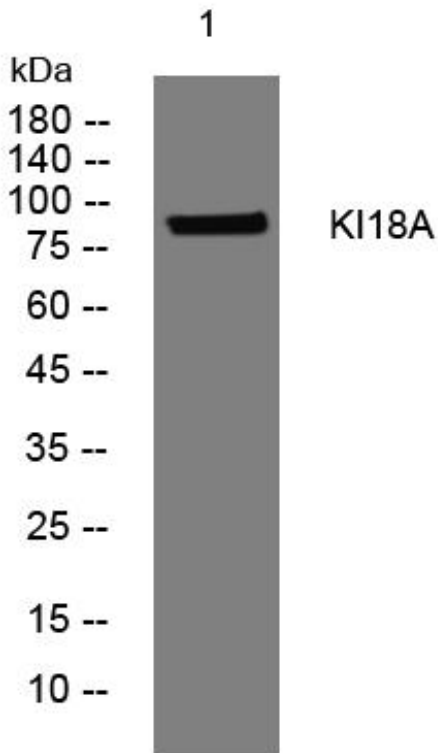
监督电话: 15950492658



Usage suggestions

This product can be used in immunological reaction related experiments. For more information, please consult technical personnel.

Products Images



Western Blot analysis of various cells using KI18A mouse mAb

Nanjing BYabscience technology Co.,Ltd

网址: www.njbybio.com

官方热线: 025-5229-8998

监督电话: 15950492658